



Erasmus+



UNIVERSITY  
OF WARSAW



DEPARTMENT  
OF CENTRAL AND EAST EUROPEAN  
INTERCULTURAL STUDIES

[www.ksi.uw.edu.pl/en](http://www.ksi.uw.edu.pl/en)



# POLAND

7<sup>th</sup> largest country in Europe (population of 38 million people)

Poland is a member of:

- European Union (28 countries),
- Schengen Area (26 countries) – whoever enters Poland may freely around travel all member states,
- European Higher Education Area (48 countries) – the integration of education systems facilitated international cooperation between academies, made it possible to compare levels of education and contributed as a result to an increase in student and scholar mobility.



# WARSAW

– POLITICAL, ECONOMIC,  
SOCIAL AND CULTURAL  
CENTRE  
OF POLAND



- Capital city of Poland
  - 1.7 million inhabitants,
  - 8.3 million tourists per year,
  - 150 cinemas, theatres, music venues and museums,
  - 79 parks, 446 kilometres of bike trails.
- Warsaw is steadily climbing the international rankings of the world's most attractive urban areas: Top 50 of the City Brand Index, United Nations State of the World's Cities report, best cities ranking and report by the Economist Intelligence Unit.

Warsaw took 15<sup>th</sup> place among most sociable and friendly cities in the world – Business Insider, “The 19 most sociable and friendly cities in the world”, 2017

Warsaw has – for the second time running – been named fDi's Polish City of the Future – fDi Intelligence (Financial Times), “Polish Cities of the Future 2017/18”, 2017

# WARSAW – ACADEMIC CITY



- 15 public Higher Education Institutions (HEIs)
- 240 000 students per year (more than in Berlin or Prague)
- Warsaw and the region of Mazovia are most often chosen by international students coming to Poland: 30% of all foreigners coming to Polish academies study here.
- According to QS Best Student Cities 2017 Warsaw took 52<sup>nd</sup> place among the best cities in the world. It receives a very high score in the affordability category – within the top five of the entire index – thanks to its combination of low living costs and reasonable tuition fees.
- According to Nature: Warsaw is the country's main research hub and is becoming a hub of globally competitive science. (“Poland: Into the light”, 2017)



# STUDENT LIFE IN WARSAW

- Accommodation: hall of residence ca. 120-140 €
- Travelling: 51% off for urban transport and train tickets
- Erasmus Student Network > mentors, events, parties, journeys
- Pubs and clubs located in the city centre and on the Vistula bank
- The Juwenalia – Student Day (2<sup>nd</sup> Friday in May )
- Budget ca. 500-700 € / month, Numbeo, Expartisan





# UNIVERSITY COMMUNITY

- 7 250 employees (3 750 academic teachers)
- 44 400 students
- 3 200 doctoral students
- 4 400 foreigners among students and doctoral students
  - 2 500 long-term students
  - 1 900 exchange and visiting students (e.g. Erasmus+)
- 3 000 postgraduate students
- 33 700 candidates for long-term studies (2 100 international candidates)
- 10 000 graduates per year

# A STORY OF THE LETTER KSI

X = Ɔ

- Katedra Studiów Interkulturowych Europy Środkowo-Wschodniej
- Department of Central and East European Intercultural Studies
- Central Europe? Eastern Europe? East-Central? CEE?
  - Many „small” nations
  - Cultural borderlands
  - Cultural contacts & transfers
  - Conflicts and coexistence
  - Languages as the key to the region.





# CULTURAL STUDIES OF CENTRAL AND EASTERN EUROPE

- I. Cultural studies: theoretical basis
  - II. Region of Central and Eastern Europe
  - III. Two countries > comparative studies
    - 2x languages: RU, UA, BY, CZ, LT, DE
    - 2x history of the country of CEE
    - 2x history of the literature
    - 2x history of culture & art
- | the above + PL
- Free course of Polish language available at the Polonicum Centre





# COURSE CATALOGUE, REQUIREMENTS

- Course catalogue: [www.ects.uw.edu.pl](http://www.ects.uw.edu.pl)
  - at least 2 courses from the host department
- Language level requirements:
  - the IRO's recommendation: Polish B2 or English B2
  - the department coordinator decides if the language level is sufficient.
- Language of instruction in the KSI is mainly Polish
  - ... except language courses
  - 5 students is enough to create new group



# DEADLINES & ACADEMIC CALENDER

- Winter semester
  - application deadline: 15<sup>th</sup> May
  - 1<sup>st</sup> October – 31<sup>st</sup> January
  - 2 weeks of examination session
- Summer semester
  - application deadline: 15<sup>th</sup> November
  - 16<sup>th</sup> February – 8<sup>th</sup> June
  - 3 weeks of examination session



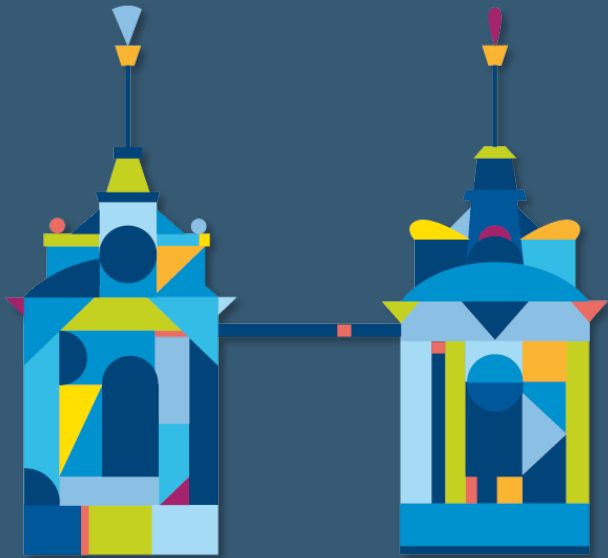


# RESEARCH IN THE KSI

- Centre for Film Studies in CEE
  - the GDR cinematography
- Centre for Drama and Theatre Studies in CEE
  - Belarusian and Ukrainian contemporary theatre
- Centre for the heritage of PL-LT Commonwealth
  - 17<sup>th</sup> -18<sup>th</sup> cent. Ruthenian book studies
  - 19<sup>th</sup> Lithuanian culture (the „book smuglers”)
  - 19<sup>th</sup> cent. script change in the CEE
  - 20<sup>th</sup> cent. Ukrainian folklore
- Centre for Cultural Borderlands: Silesia, Galicia, Vilnius
- Centre for Semiotics of Culture







Dziękuję! Дякую! Дзякуй!  
Ďakujem! Děkuji! Hvala!  
Хвала! Спасибо! Благодаря!

Thank you!



DEPARTMENT  
OF CENTRAL AND EAST EUROPEAN  
INTERCULTURAL STUDIES

KAMIL DWORNIK, MA  
Erasmus+ coordinator

[erasmus.ksi@uw.edu.pl](mailto:erasmus.ksi@uw.edu.pl)

[www.ksi.uw.edu.pl/en](http://www.ksi.uw.edu.pl/en)

