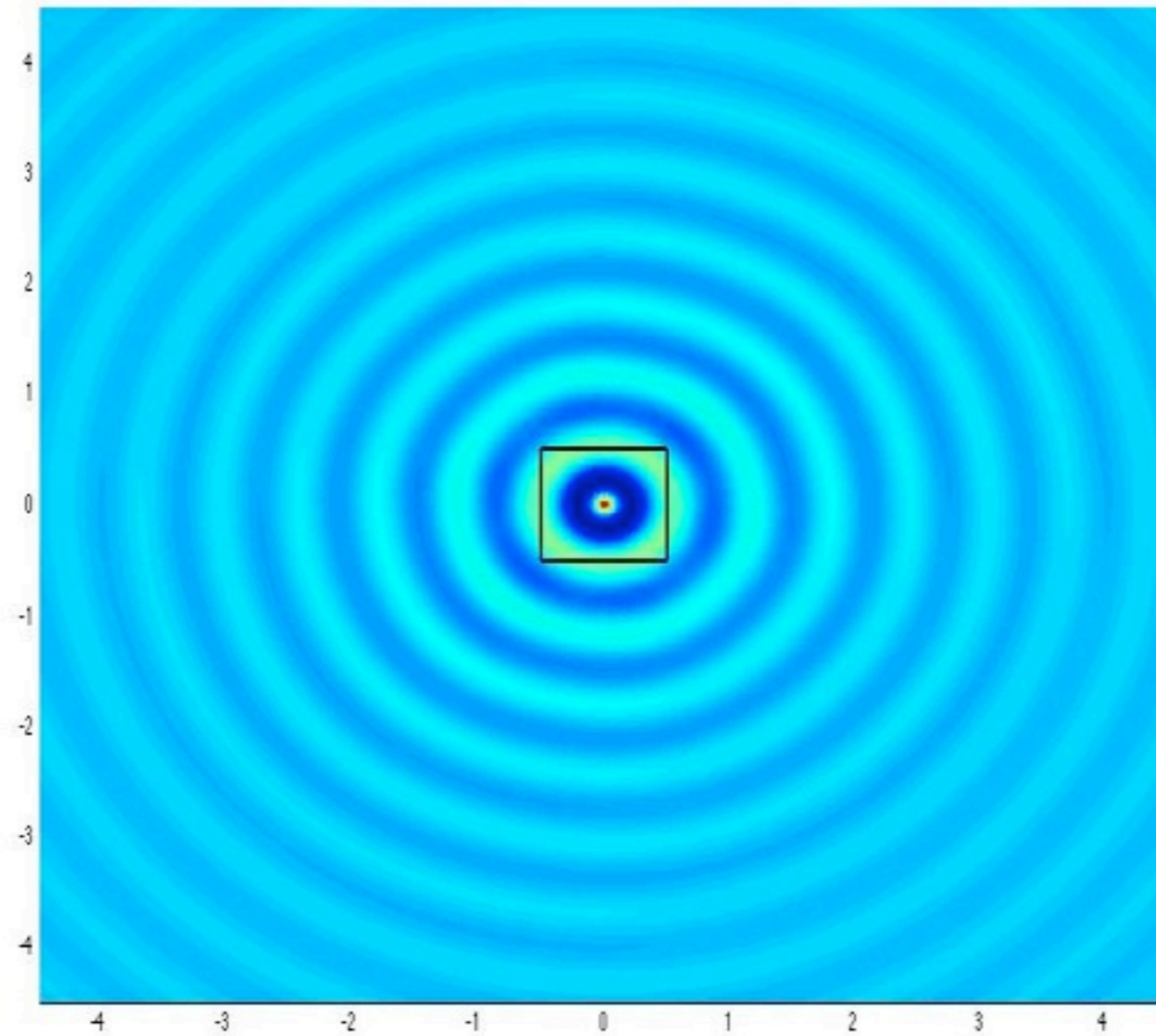
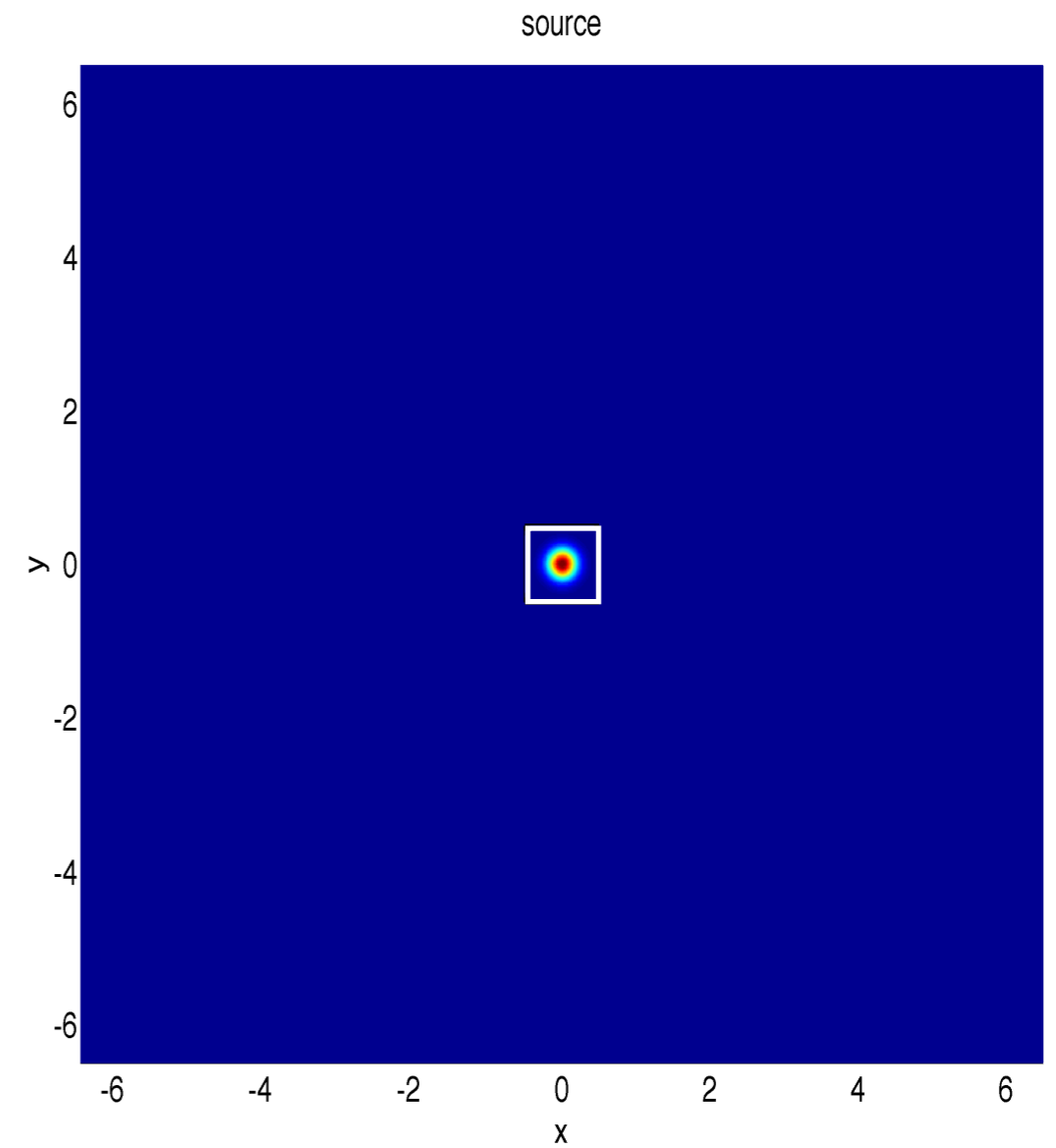
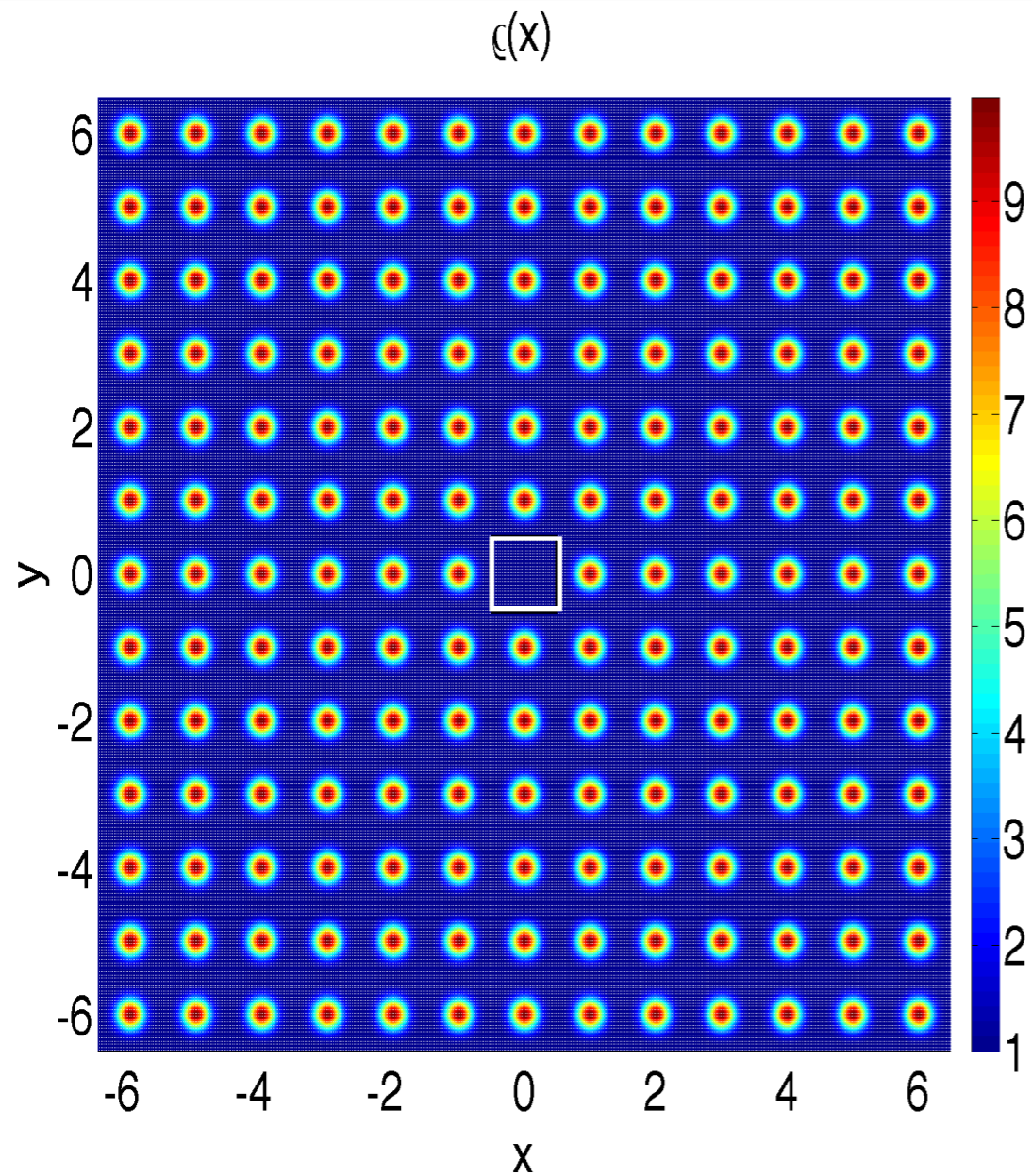


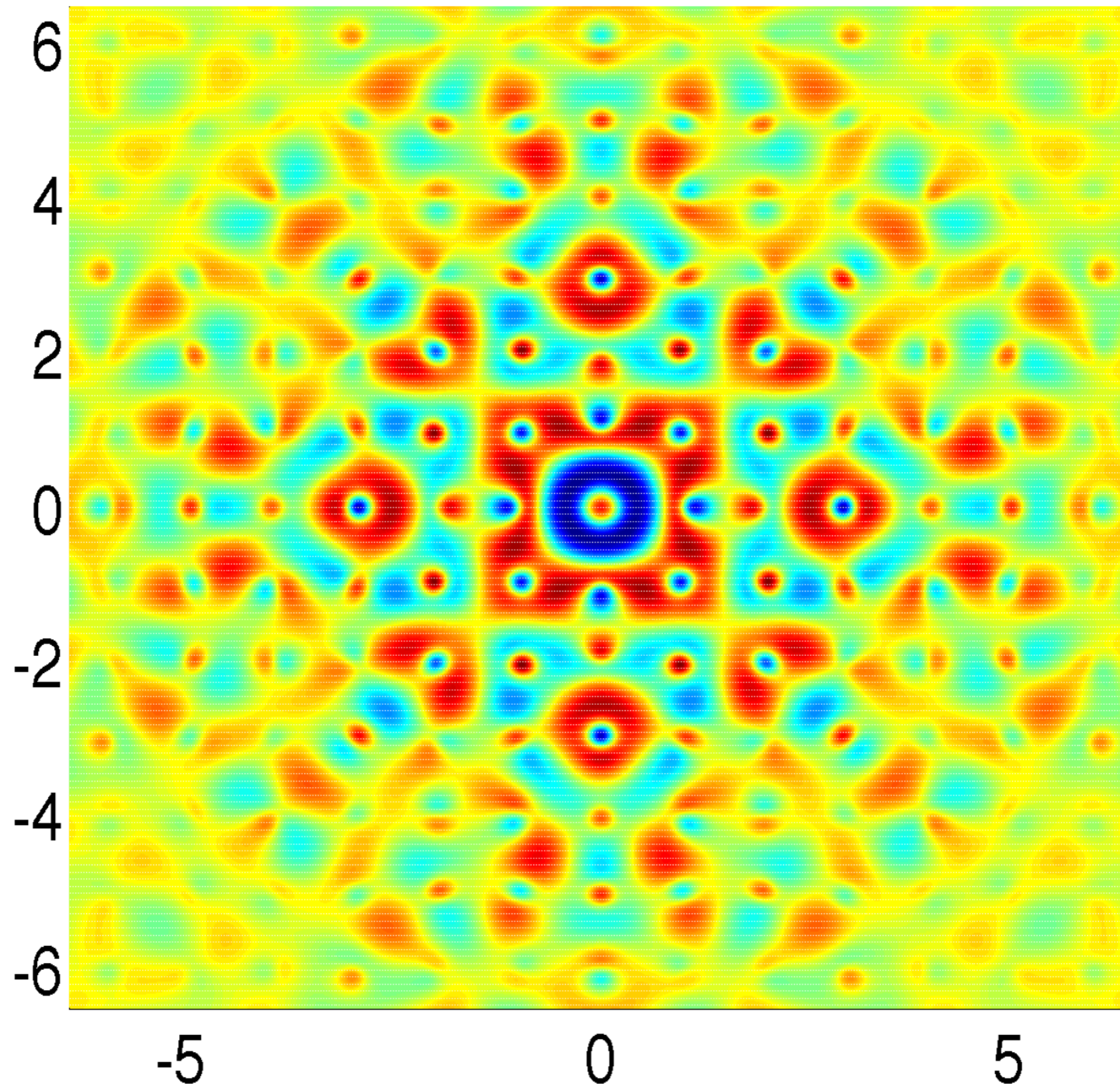
Solution in the interior domain

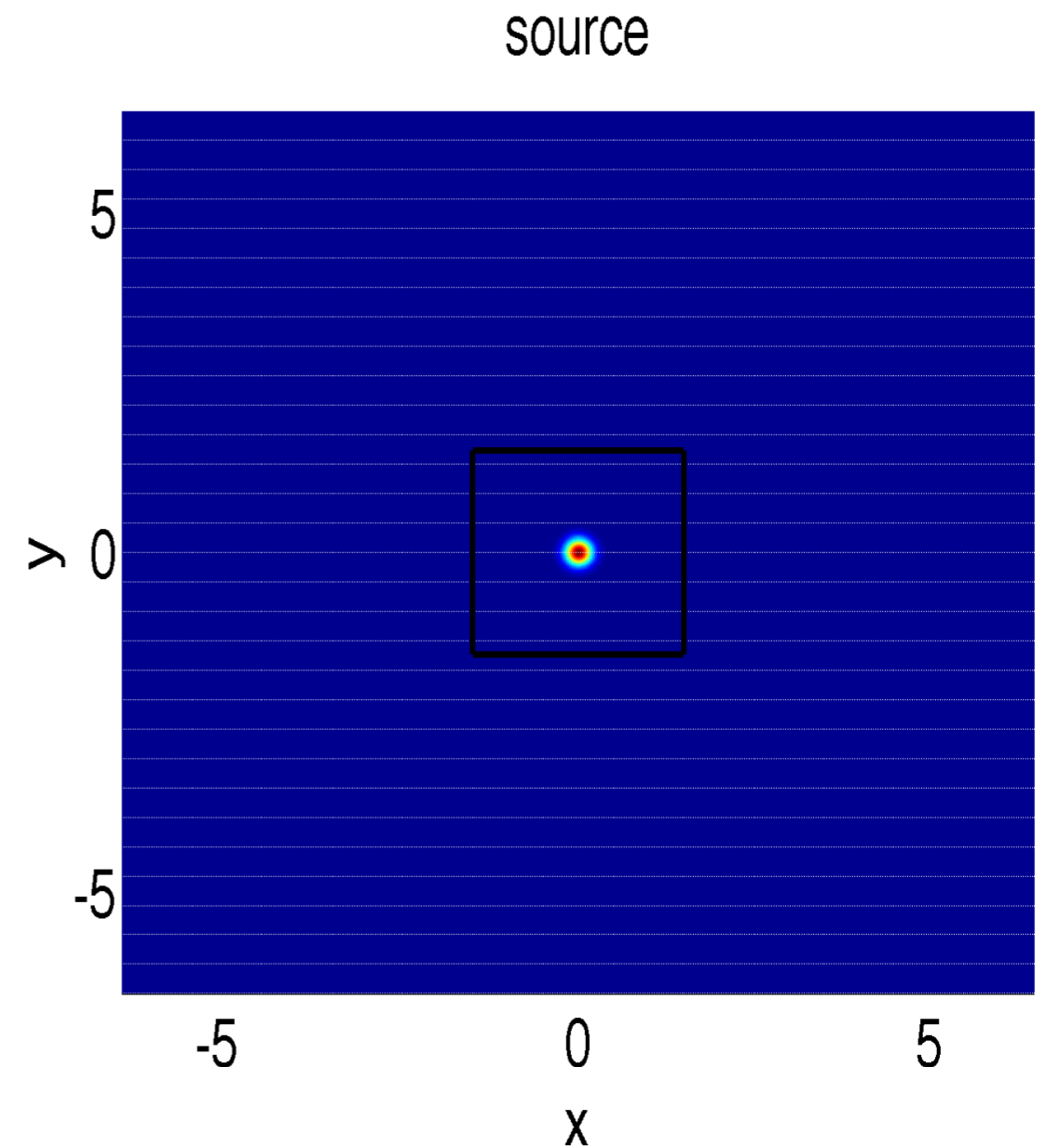
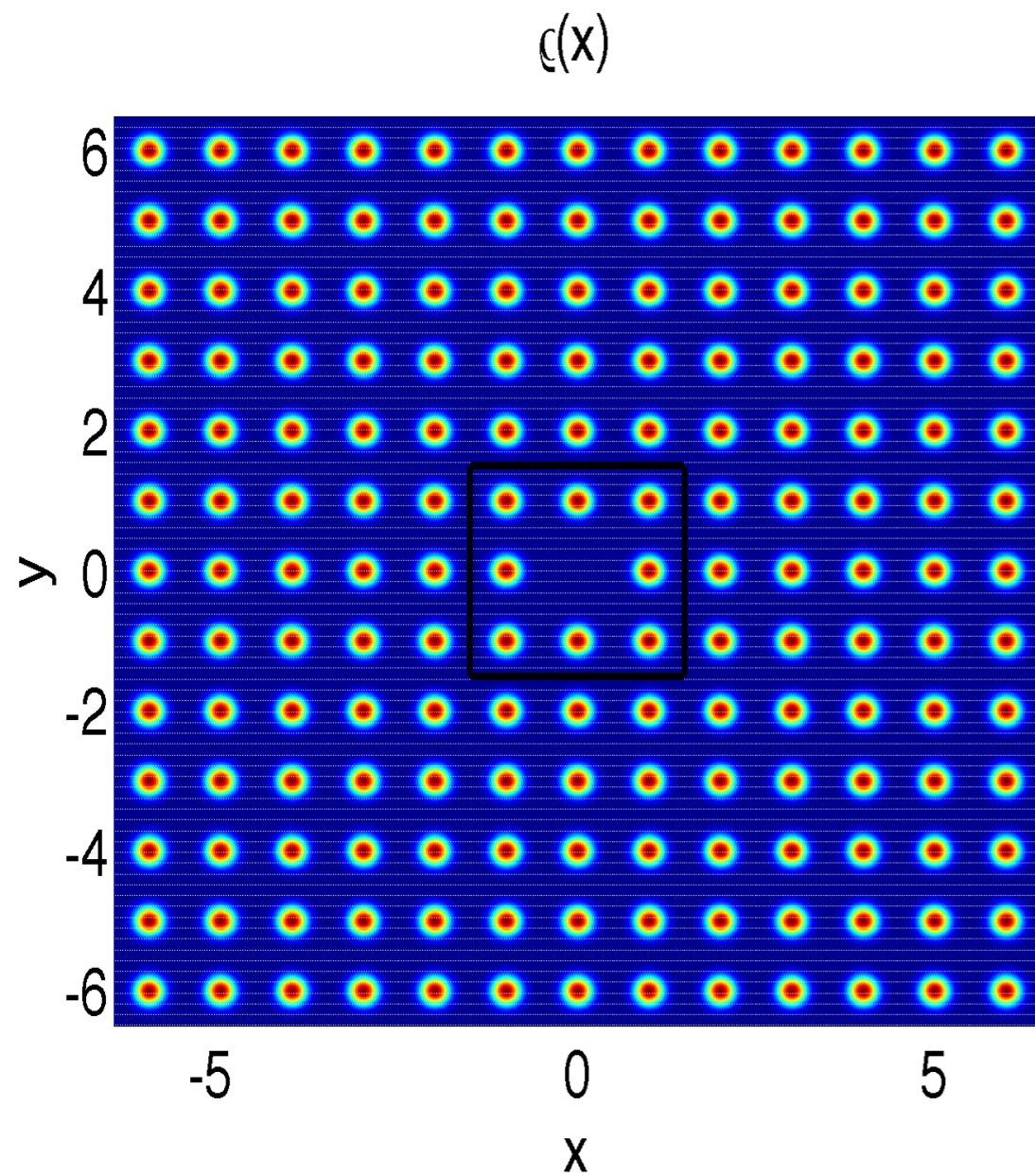


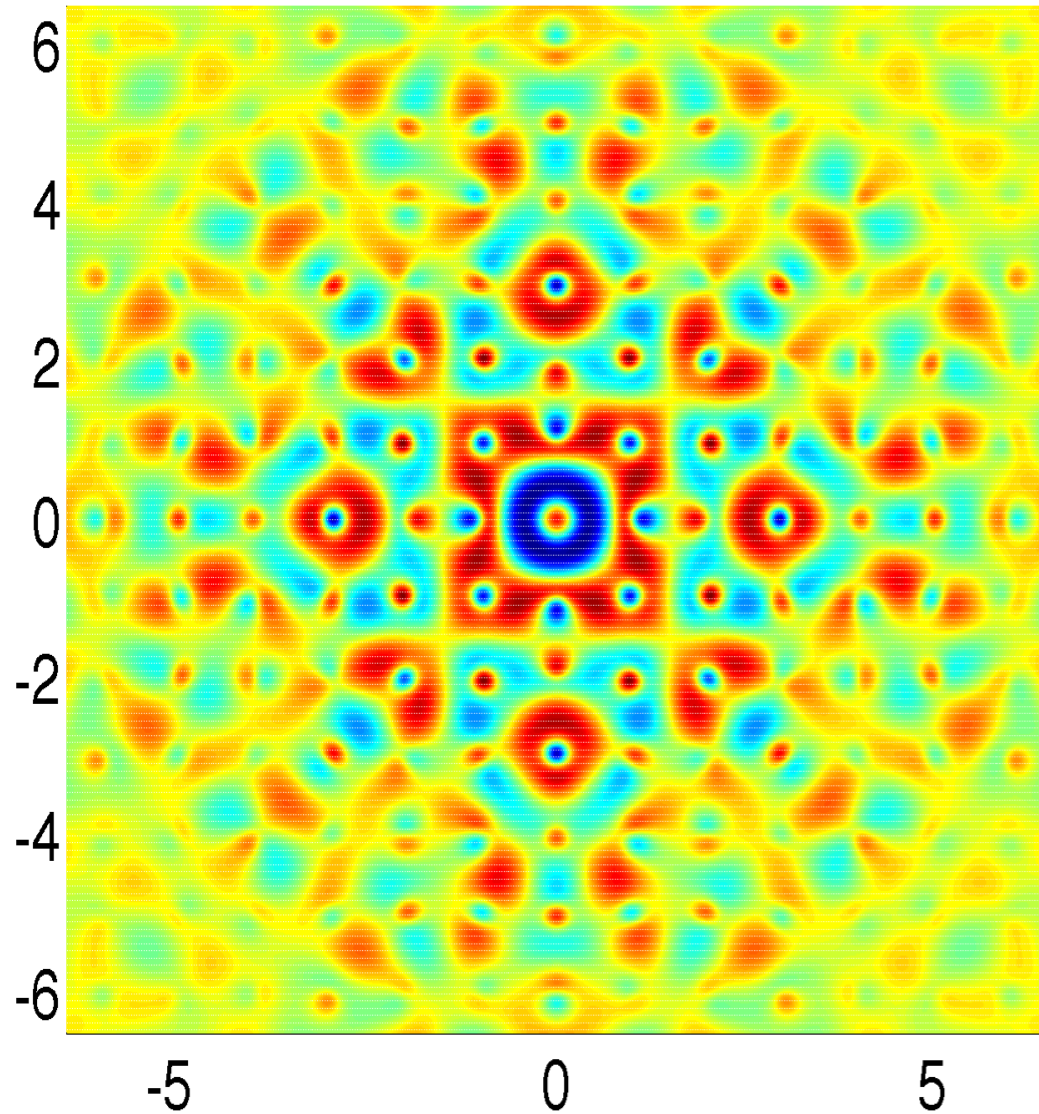
Solution in the exterior domain

The 2D plane problem

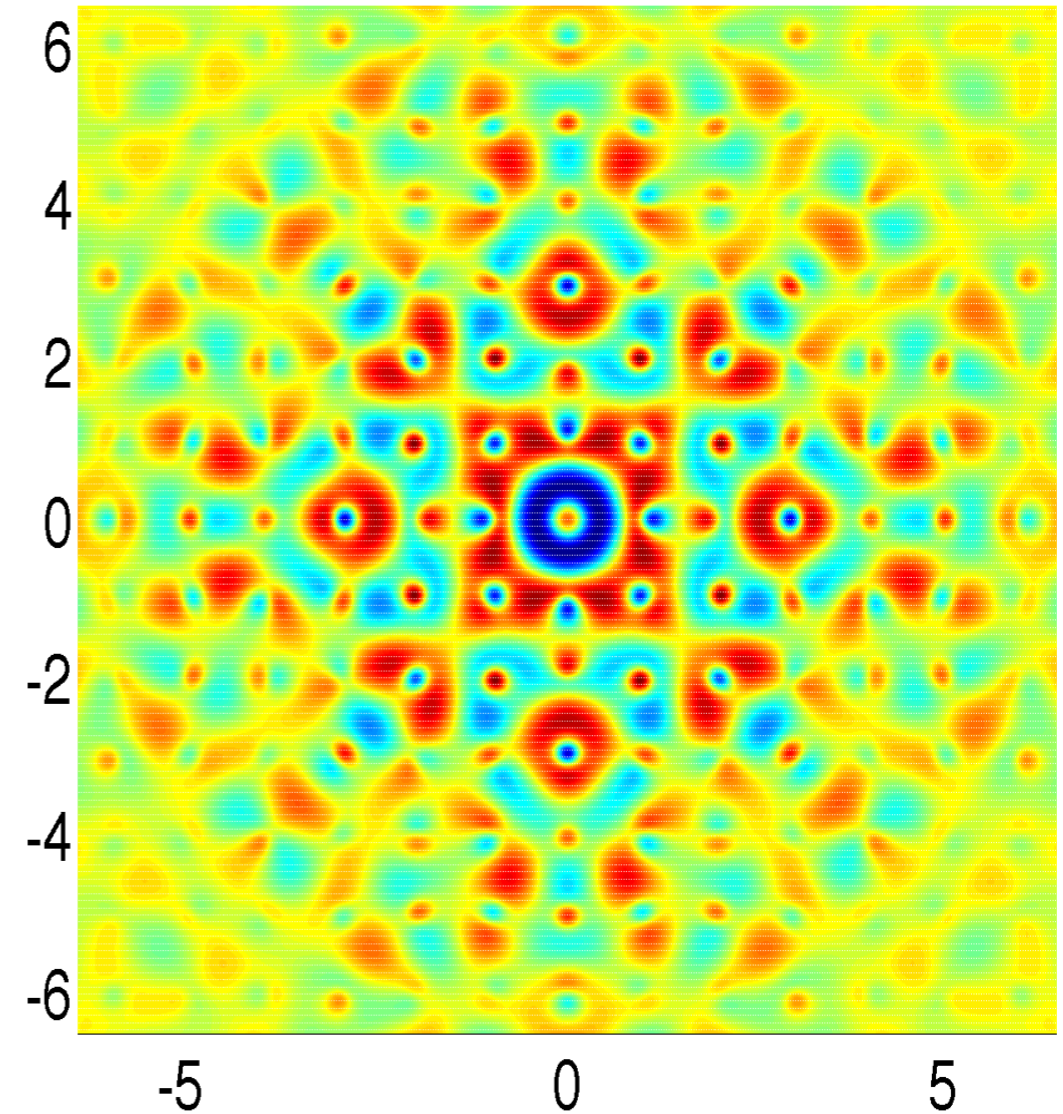








$N=1$



Larger defect , $N=3$

Numerical methods for time harmonic scalar wave equation in locally perturbed periodic media - Part 3

Sonia Fliss

POEMS (UMR 7231 CNRS-INRIA-ENSTA)

*Mainly based on joint works with Julien Coatleven,
Patrick Joly and Jing-Rebecca Li*