

Content

Dear PhD-students, Supervisors and Project Partners,

the SME-network has been contributing to the linking-up of PhD-students and small and medium-sized enterprises in the Göttingen region under the umbrella of the GGG for six years. In our current newsletter you learn everything about the following continuation of this successful project. Furthermore, you may find information on:

| | |
|---|----------|
| Information for Newcomers | 3 |
| News of the GGG | 4 |
| On our own account | 4 |
| Qualification | 5 |
| Sponsorships | 6 |
| Prerequisites and prospects of doing a doctoral degree | 6 |
| At a glance | 7 |
| Events | 7 |
| Team | 8 |

Your GGG-Team

Göttingen Graduate School
of Social Sciences

Contact

Göttingen Graduate School of Social Sciences (GGG)

Fon: +49(0) 551 - 39 12417

Fax: +49(0) 551 - 39 10647

E-Mail: ggg@uni-goettingen.de

Internet: www.ggg.uni-goettingen.de

Facebook: www.facebook.com/GGG.de

Advancement and opening of the SME-network of the GGG

The SME-network had been active under the umbrella of the GGG since December 2008. Since then, stable networks between the university and small and medium-sized enterprises (SMEs) have been formed and successful measures have been established that will now be stabilized on different levels.

Prof. Kilian Bizer (Chair of Economic Policy and SME Research) started the setup of a "SME-network of the GGG" as spokesman of the Göttingen Graduate School of Social Sciences (GGG) in 2008. This project has been funded with € 560,000 by the European Regional Development Fund (ERDF) over a period of nearly six years. It was largely supported by the five member faculties, the executive board and the GGG team. The SME-network was furthermore accompanied by an [advisory board](#), which is composed of company representatives, chambers and university, and which allowed indispensable proposals and contacts.

The key objective of the project was to promote the scientific exchange as well as the establishment of contacts between small and medium-sized enterprises (SME) in Lower Saxony with PhD-students of the social sciences. As a result, new career perspectives within the region are opened and consequently the positioning of regional SMEs is improved by the development of scientific competencies. By reducing the brain drain from the region, it moreover contributes to a positive regional development.

During the six years of sponsorship, trustful and reliable contacts to regional enterprises, the Chamber of Commerce and Industry, the Chamber of Crafts, to business promoters

as well as to the PFH - Private Hochschule Göttingen, the HAWK University of Applied Sciences and Arts and the TU Clausthal have been made, innovative types of events have been established and new training opportunities for PhD-students qualifying them for careers in economy have been created.



As of November 2014, following the funding period of the SME-network, the established networks and measures within the region will be largely continued. For this purpose, the activities of the SME-network will effectively "bifurcate": Measures relating to knowledge transfer and networking between university and economy will be centrally continued by the newly created position "Business Contacts" within the Public Relations staff unit. They will be opened beyond the Social Sciences for the entire university and further developed. The GGG will continue to offer the established training opportunities regarding career perspectives outside the university to PhD-students of the Social Sciences.

In addition, both facilities will carry on jointly with the new format of mentoring for careers in economy (KaWirMento). It aims at facilitating starting a career in enterprises for PhD-students and PostDocs and at trans-

ferring knowledge of entrepreneurs directly to the university. While the GGG qualifies PhD-students for professional practice and attracts suitable PhD-students as mentees, especially the matching of the mentee and the mentor from economy is specifically supported by the Business Contacts unit.

Exemplary measures by the Business Contacts unit: Knowledge transfer and networks

The lecture series *"PraxisForum – wir verbinden kluge Köpfe"* will remain one of the most important offers in the future, where professors every year in springtime briefly and precisely present practice-related research and are available for direct discussions with the enterprises. To deepen these contacts, the second part of the event with a "scientific speed dating" takes place in fall. Here, enterprises and students can explore possibilities for cooperation. At the same time, the "Round Table" allows to delve into company-relevant topics or to make further contacts.

The format *"PraxisForscher"* will also be based in this unit in the future. In this project, scientists investigate concrete questions related to practice in cooperation with a company and develop solutions. Due to the personal contacts between the researchers and the management of the SME, this format leads to close ties between the university and the region and opens up additional potential on both sides.

Finally, also the format *"Blick in die Forschung"* contributes to knowledge transfer by spreading a generally understandable summary of company-relevant PhD thesis results in the region.

However, the SME-network not only aims at knowledge transfer between the region and academia but generally at a development of the region. Therefore, a task force was formed from the advisory board, which under the leadership of the SME-network with Professor Bizer and under the umbrella of

the SüdniedersachsenStiftung has created a foundation for combining forces and resources in the region with the strategy paper *"Innovationsregion Südniedersachsen: Regionalökonomische Strategie"*.

In order to also embed this regionally, a concept for the so-called SüdniedersachsenInnovationscampus (SNIC) will be developed in the following months.



Contact:

Christina Qaim

Head of Department Business Contacts
www.uni-goettingen.de/de/437597.html
Tel. +49 551 39-33955
christina.qaim@zvw.uni-goettingen.de

Jaqui Dopfer

Coordination SME-network and regional development
www.kmu-netzwerk.uni-goettingen.de
Tel.: +49 551 39-10646
kmu-netzwerk@uni-goettingen.de

Offers by the GGG: Qualification of PhD-students

The GGG has been the umbrella for the constitution of the SME-network since 2008, meaning it significantly contributed to the application, realization and budget management of the SME-network. The organizational development of the GGG proceeded parallel to the constitution of the SME-network.

Qualification opportunities and the support of professional competencies for PhD-students within the social sciences were extended and by bonding with the regional economy, an essential main pillar of the graduate school was build up – a process which is stabilized by further work of the GGG.

The GGG with its 1,300 PhD-students, 172 university lecturers and 14 thematically focused PhD programs will be available as a network partner for business contacts also in the future. In addition, the GGG has, together with the Hans Böckler foundation, initiated an accompanying PhD program *"Qualificational upgrading in SME"* for the academization and need for specialized employees in SMEs, in which the characteristics of knowledge transfer and qualification between SMEs and university are studied.

The former SME section of qualifying PhD-students for careers in the (regional) economy will be continued within the graduate school as part of the university concept for the promotion of young talents. This can be seen in the continuing planning of occupational qualification and counseling measures beyond the eligibility period of the SME-network (see editorial on the new GGG course concept from 2015 on in *newsletter 03|2014*).

Contact:

Dr. Bettina Roß

Management GGG
www.ggg.uni-goettingen.de
Tel.: +49 551 39-12417
ggg@uni-goettingen.de

Information for Newcomers

Here, we provide information at irregular intervals for PhD-students who just started their dissertation or are new in the GGG. Even though intended for newcomers mainly, this column also contains information relevant to experienced PhD-students.

First, we would like to warmly welcome you! As the Graduate School of Social Sciences, we will accompany you during your PhD and do our utmost to support you.

Admission to a doctorate

You will find comprehensive and combined information on the first steps from admission to a doctorate to enrollment on the website of the [Office for Student Affairs](#).

All questions on prerequisites, deadlines for application, recognition of academic degrees and the PhD procedure will be answered by the deanery or the Study advisory office of the [respective faculty](#).

After you found a professor who will supervise your PhD, please clarify financing e. g. with your supervisor. Dr. Kristin Schröder from the [GGG PhD Funding Guidance](#) offers you advice concerning the search for funding possibilities.

After admission at your faculty, please [enroll](#) at the university's Registrar's office. Enrollment is mandatory for PhD-students, too.

Doctoral studies

There are three ways to a doctorate in social sciences at the Göttingen University:

- individual doctoral degree at the Faculty of Law,
- within a PhD degree program at the Faculties of Agricultural Sciences, Forest Sciences, Social Sciences or Economic Sciences or
- within a program, e. g. a research training group.

To earn an individual doctoral degree, you write your dissertation at the chair of your professor at the Faculty of Law.

In a PhD degree program you undergo a structured study program next to writing your dissertation or your scientific papers (cumulative PhD), respectively. You attend method and key skill courses as well as colloquia for usually 20 credits. In the four mentioned faculties in Göttingen, there is only this form of doctoral studies.

A "program" groups PhD-students to a specific topic. These groups work interdisciplinary and cross-institutional. You may find the current programs which are members of the GGG [online](#).

It is recommended or mandatory (depending on whether you chose individual or structured doctoral studies) that you enter into a PhD agreement with your supervisor which defines start, topic and the involved parties of your PhD. You should regularly discuss the progress of your work with your supervisor, at least once per year. These discussions should also address the compliance of good scientific practice. This is a negotiated agreement in science. To avoid scientific misconduct, [Göttingen University](#) and the [DFG](#) have published a collection of recommendations.

In PhD degree programs or in a program you are not only accompanied by one person but by a thesis committee. This committee comprises at least two, usually three PhD supervisors and you. Its purpose is that you regularly speak about the progress of your PhD and that you come to a solution together in case of difficulties.

All doctoral studies have in common that the dissertation is submitted to the faculty and that the oral final exam is taken at the faculty. The respective deanery thus accompanies all formal steps of your PhD.

Support by the GGG

You are automatically a member of GGG as soon as you are admitted to a doctorate in one of the PhD degree programs or at one of the five member faculties of the GGG (in agricultural sciences this holds true for the Department of Agricultural Economics and Rural Development only, in forestry for Forest Economics and Forest Policy only).

We kindly ask you to send our [questionnaire](#) to the GGG right at the beginning – and to update it if needed – to allow us to contact you. These data will only be used within the GGG.

There are no additional obligations associated with your membership. In fact, you have access to:

- the GGG [course program](#),
- the GGG [counselling offers](#),
- the [Helpdesk for International PhD-students](#) as well as
- GGG [funding measures](#), e. g. grants.

You will find an overview of the GGG team, our offers and application deadlines on the GGG homepage (www.ggg.uni-goettingen.de) and in the newsletter at hand. If you are registered at GGG, you will receive the newsletter automatically. Should this not be the case, please send us an email – for example if you belong to the university staff and want to receive this newsletter as well.

If you are reading the paper version of this newsletter, you may find the included links as hyperlinks at:

www.uni-goettingen.de/en/498088.html

News of the GGG

Revised application deadlines for mentoring

Due to organizational changes of the mentoring coordination, the deadlines for application of PhD-students and PostDocs for the following mentoring formats had to be changed:

The application deadline for "Paths into Science Management" (WeWiMento) expired on November 15. Application for the next round will presumably be possible in October/November 2015.

Application for "Paths into Economy" (KaWiMento) is possible between December 1, 2014 and January 31, 2015.

www.uni-goettingen.de/en/444677.html

Project "Building bridges" for PhD-students

Based on the successfully introduced project "Building bridges for students" – designed for students who are the first in their family going to university or planning on taking up studies – the GGG project "Building bridges for PhD-students" starts in December. In this biennial pilot scheme, measures are to be set up for PhD-students of social sciences who are the first in their family to do or to consider doing a PhD. These measures should lower the inhibition threshold for talented academics of the first generation and allow for a smoother entry into academic careers. Further information will follow.

News about the Methodological Week of the GGG

This year's Methodological Week of the GGG was well attended with 40 participants. This year, the contents and the structure of the event were modified based on evaluations of PhD-students in the previous years. Among other things, only one workshop block (consisting of several workshops running in parallel) was offered over the entire duration of the Methodological Week instead of two consecutive workshops. In addition, the lecture in the middle of the Methodological Week was replaced by a keynote speech at the beginning, allowing all participants to have a common start into the week. The participants considered this new structure reasonable and the atmosphere resulting

from it clearly more relaxed. The good contact to the lecturer that became possible due to the longer duration of the workshops was additionally remarked with appreciation. The overall satisfaction with the offer of the Methodological Week therefore increased from 2.6 (on a scale of 1 to 6, 1 being best) in the year 2013 to 2.1 in the year 2014.

We would like to continue this positive trend in the following year and are therefore already planning the Methodological Week 2015, which will, by the way, be the tenth anniversary of this event. You can already note the date for it: The tenth Methodological Week of the GGG will take place on September 14 to 17, 2015. You will find further information from June 2015 on at: www.methodenwoche.uni-goettingen.de

GGG course offer in the year 2015

At the same time as this newsletter, our yearly course booklet with all qualification measures which the GGG offers in the year 2015 is published. With this overview you can plan your advanced training in the area of key qualifications and methodological knowledge anticipatory. The application deadlines for the individual courses are noted in the booklet. We will furthermore point out to you current open application deadlines in our quarterly newsletter. In addition, you can find the complete course program as well as further information regarding registration at: www.qualiportal-promovierende.uni-goettingen.de

Election of the next PhD representatives of the GGG

The next election of PhD representatives of the GGG will take place in March 2015 – and you can stand as a candidate. Do you want to actively shape the work of the GGG for the PhD-students? Then announce your candidature to the GGG!

You will receive the official call for vote in December. Further information can be found at:

www.uni-goettingen.de/en/447778.html

We are looking forward to your candidature!

On our own account

Please note especially that with publication of this newsletter the login window for the coming courses is open: PhD-students can now register for GGG courses of the first quarter 2015.

This newsletter is published quarterly. It is available to the PhD-students and supervisors of Social Sciences as well as to all interested parties. The newsletter is provided online at www.uni-goettingen.de/en/42253.html.

You can also obtain it by e-mail. The next newsletter will be published on February 16, 2015.

This newsletter is supposed to inform you about fundamental issues regarding doing a PhD, contribute to a closer contact between you and the GGG team and thus help you to be informed in time about all offers of the graduate school. For further information, please do not hesitate to contact our team (see last page of the newsletter). Of course, you can also find additional information regarding the different projects online.

Qualification

Our courses in the first quarter 2015

As of now, you can enroll for the following courses of the first quarter 2015 at ggg.kursanmeldung@uni-goettingen.de. Detailed information on our courses and on further courses for PhD-students offered by cooperating institutions can be found at:

www.qualiportal-promovierende.uni-goettingen.de

| Date | Topic | Referee |
|---------------------|--|---------------------------|
| 23.01. & 30.01.2015 | Intercultural Training in Science and Research | Prof. Dr. Gardenia Alonso |
| 11.02. & 12.02.2015 | Presse- und Öffentlichkeitsarbeit für Nachwuchswissenschaftler/innen | Thomas Richter |
| 26.02. & 27.02.2015 | Die Promotion als Projekt | Dr. Nils Reschke |
| 06.03. & 07.03.2015 | Einführung in die Datenanalyse am Beispiel von SPSS | PD Dr. Micha Strack |

And this is how it works: The GGG divides the course year into four quarters. You can sign up for courses of a quarter six weeks before begin of that respective quarter. 12 to 16 PhD-students can participate in a particular course. Places are assigned on a first come, first served basis. Four weeks before start of the course, application is considered binding; this applies to all applications. You can also find detailed information on individual courses and the application procedure at:

www.qualiportal-promovierende.uni-goettingen.de

Please only use the following email address for registration: ggg.kursanmeldung@uni-goettingen.de.
Please consider the applicable registration procedure.

Courses on teaching methods in higher education for PhD-students and new teachers

We would furthermore like to draw your attention to the following courses of the division for Teaching and Learning in Higher Education Göttingen, which target especially PhD-students:

| Date | Topic | Referee |
|---------------------|---|------------------|
| 01.12. & 02.12.2014 | Und jetzt soll ICH sagen was richtig ist... Vom Rat-Suchen zum Beraten | Dr. Jutta Wergen |
| 14.01. - 16.01.2015 | Introduction to Teaching & Learning in Higher Education | Daan Romein |

Further information and registration can be found at:

www.uni-goettingen.de/en/365991.html

Sponsorships

The Göttingen Graduate School of Social Sciences provides funding and scholarships for PhD-students of social sciences. The respective measures will be published on the GGG website in the course of the year:

www.ggg.uni-goettingen.de/GGG-sponsorship

The following funding options are available for the coming months:

| Funding measure | Duration | Application deadline | Funding amount | Target group |
|----------------------------------|------------------|----------------------|----------------------------------|--|
| GGG Family Grant | 4 – 6 months | 15.01.15 | € 1,200-1,300 per month | PhD-students with children under the age of twelve or who look after care-dependent family members and therefore need time for finishing their PhD |
| Research Assistantships | 3 months at 20 h | 15.01.15 | € 308 pre-tax x 3 months WHK | Foreign PhD-students who carry out a three-monthly research project |
| KaWirMento | 1 year | 31.01.15 | Mentoring and qualification | PhD-students and PostDocs seeking a career in economy |
| Participation in a summer school | Flexible | Flexible | Depending on available resources | PhD-students who would like to attend an international summer school that offers direct benefit for their PhD thesis |
| Forum of PhD-students | Flexible | Flexible | Depending on expenditure | PhD-students who want to network in a professional context |

Prerequisites and prospects of doing a doctoral degree

A PhD is not only a prerequisite to become a professor. It also opens new careers within and outside the university, e. g. in science management, enterprises and ministries. In order to prepare you as a PhD-student for these different careers, the GGG not only offers courses for different professional careers, but also informs you about the framework conditions and perspectives of a PhD in the particular field. Two of several possible job fairs, where PhD-students of the social sciences and law can gather information on the PhD-regulations and the career opportunities after completing their studies, are the following:

Talk and information at the SoWi GO! on November 18, 2014

At this year's SoWi GO! you can, among other things, find information on the possibilities and the framework conditions of a PhD in the social sciences. The GGG will offer an information talk on this topic together with Martin Ertelt (Students office Social Sciences) on November 18 at 1 pm, room Oec 0.211, and furthermore be available to answer your questions.

www.uni-goettingen.de/de/193334.html

Talk and information at the Career Day of the Faculty of Law on December 10, 2014

This year's Faculty Career Day of the Faculty of Law offers you the possibility to find information about the possibilities and framework conditions of a PhD in law. The GGG will contribute by offering an information talk together with Susanne Herrmann (referee of the deanery of the Faculty of Law) and Jan Mertens (PhD-student at the faculty, LL.M) on December, 10 from 11:00 am to 12:00 in room Jur. 0.116. In addition, the GGG will be available to answer your questions at a GGG booth on the fair from 10:00 am to 4:00 pm.

www.myjobfair.de/fakultaetskarrieretage/fakultaetskarrieretage-2014/10-12--georg-august-universitaet--goettingen-juristische-fakultaet/

At a glance

Kick-off for the 5th round of the Dorothea Schlözer Mentoring Program

The festive closing event of the 4th round of the Dorothea Schlözer Mentoring Program took place in the Paulinerkirche on October 23, 2014, together with the kick-off for the fifth round. In addition to the reception of the mentees by the program coordinator Dr. Vera Bissinger, the university's president Prof. Ulrike Beisiegel greeted the 23 new participants of the program. The mentoring program offers a systematic and structured career advice and guidance to female PhD-students and PostDocs aiming at an academic career. New mentees are accepted every year in October. Further information at: www.uni-goettingen.de/mentoring

Open Video Lectures "CoScience"

Researchers' daily business is increasingly influenced by the tools and possibilities of the internet and collaborative work. From November 2014 to February 2015, Open Science Lab presents a video lecture series for young researchers on collaborative scientific work using the internet. Further information (only in German) at:

<http://blogs.tib.eu/wp/coscience/>

Lecture series and further events organized by the Equal Opportunities Office in the winter term 2014/15

Positioned in multiple ways – discriminated against in multiple ways?! – this is the title of the lecture series "Everyone equally different!?' Diversity in theory and practice" in the winter semester 2014/15. People may be discriminated against and disadvantaged because of manifold attributions. The lecture

series deals with discrimination at the interface of several such assumed "attributes". You can find the dates of the lectures at: www.uni-goettingen.de/diversity-vortragsreihe

The Equal Opportunities Office offers two workshops in cooperation with the division for Teaching and Learning in Higher Education: On Friday, November 28, 2014, the workshop "Teach More Fairly. Reflecting Gender in Higher Education Teaching", with Dr. Lisa Mense as the lecturer, will take place. On 08.01. & 09.01.2015, Dr. Henrike Lehnguth will conduct the workshop "Teaching and learning in the international classroom". You may find further information as well as the possibility for registration at: www.uni-goettingen.de/en/489690.html

European Research Council lecture

The Lichtenberg-Kolleg cordially invites advanced PhD-students of the GGG to the following lecture:

Dr. Carlos Martín-Vide (European Research Council) ERC Starting Grants and Consolidator Grants

Place: Grüner Saal at the Historical Observatory

Date: December 17, 2014

Time: 4 pm c.t.

Mr. Martín-Vide will give some insight into European guidelines for research funding and assessment practice. If you want to participate, please register with ggg@uni-goettingen.de until December 1 latest.

The Lichtenberg-Kolleg is planning further presentations concerning Early Career Development, which are going to be available on their homepage shortly:

www.lichtenbergkolleg.uni-goettingen.de

Events

The GGG is hosting different events to which we would like to cordially invite you. You can already make a note of the following events. Additional information and starting times will be provided on our website, in leaflets, and by the team of the GGG. In the next months, the Helpdesk of the GGG offers events especially catered towards international PhD-students:

Supermarket-Tour on November 26, 2014

To show you some of the different kinds and qualities of food in Germany, we would like to invite you to a tour around the shelves and fridges of the local supermarkets. In particular, we will talk about the various eco-labels and features like vegan and lactose-free. Afterwards, we can taste some of the products. Further information and registration can be found at:

www.uni-goettingen.de/en/498360.html

Christmas market in Göttingen on December 11, 2014

We are planning to visit the Christmas market in Göttingen and have a guided tour around the town centre, explaining local

customs and traditions connected to Christmas. Later on, we can enjoy the festive atmosphere and taste seasonal specialties like Lebkuchen and Glühwein. Further information and registration can be found at:

www.uni-goettingen.de/en/498361.html

Culinary evening on January 21, 2015

To give you some German cuisine hands-on experience, we invite you to cook and share a meal together. The dishes will be discussed in advance within the group. Further information and registration can be found at:

www.uni-goettingen.de/en/498363.html

Team

Office Administration



Dr. Bettina Roß

Executive Direction

Conceptual questions and issues for the future, PhD-programs, advice for PhD-students, funding and general questions.

Tel.: 0551 39 12417

e-Mail: bettina.ross@uni-goettingen.de



Dr. Manuel Thiel

Project Consultance

(Parental Leave)



Claudia Kohrell

Financial Administration

Contact person for applications, grants, funds management, invoices, forms, and organizational questions.

Tel.: 0551 39 10629

e-Mail: claudia.kohrell@uni-goettingen.de



Dr. Kristin Schröder

PhD-Funding Guidance

Advice on PhD funding (individual support), qualification courses, newsletter, research assistantships and general questions.

Tel.: 0551 39 20449

e-Mail: kristin.schroeder@uni-goettingen.de

Helpdesk for International PhD-students



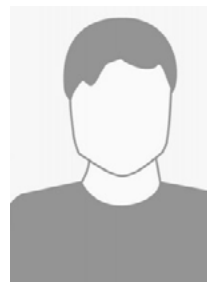
Judith Kaschner

International Helpdesk

Support for international PhD-students and organization of intercultural events.

Tel.: 0551 39 10952

e-Mail: helpdeskggg@uni-goettingen.de



N. N.

Project "Building Bridges"

Project "Building Bridges" for PhD-students

Business Contacts (Public Relations Department)



Christina Qaim

Head of Department Business Contacts

www.uni-goettingen.de/en/437597.html

Tel.: 0551 39-33955

e-Mail: christina.qaim@zvw.uni-goettingen.de



Jaqui Dopfer

Coordination SME-Network and regional development

www.kmu-netzwerk.uni-goettingen.de

Tel.: 0551 39 10646

e-Mail: kmu-netzwerk@uni-goettingen.de

Publishing Information

Göttingen Graduate School of Social Sciences (GGG)

e-Mail: ggg@uni-goettingen.de

Internet: www.ggg.uni-goettingen.de

This Newsletter will be sent to all members of the GGG. In case of questions or remarks, please contact ggg@uni-goettingen.de.

Translation: Dr. Birgit Manno

Image Copyright: © Pressestelle der Georg-August-Universität Göttingen, GGG, DAAD, fotolia.com, EFRE