

## Our partners



Universitat Pompeu Fabra  
(Barcelona)



Università degli Studi di Milano-  
Bicocca (Milan)



Università Ca' Foscari Venezia  
(Venice)



Consorzio Interuniversitario  
Nazionale per l'Informatica  
(Rome)



Universiteit van Amsterdam  
(Amsterdam)



Boğaziçi Üniversitesi  
(Istanbul)



Centre National de la  
Recherche Scientifique (Paris)



Université Paris Diderot - Paris  
7 (Paris)



Tel Aviv University  
(Tel Aviv)



Georg-August-Universität  
Göttingen (Göttingen)



This project has received funding from  
the European Union's Horizon 2020  
research and innovation programme  
under grant agreement No 693349.



For more info on the project  
visit our official website

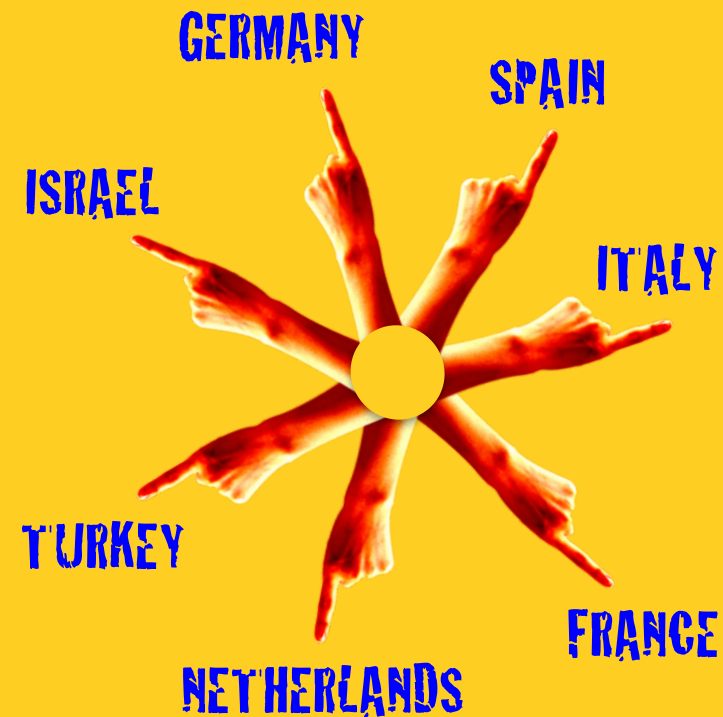
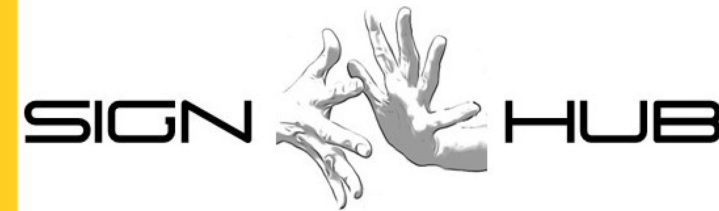
[www.sign-hub.eu](http://www.sign-hub.eu)

Check out our FB page

[www.facebook.com/sign.hub.project](https://www.facebook.com/sign.hub.project)



Contact us by email  
[sign-hub@upf.edu](mailto:sign-hub@upf.edu)



### The SIGN-HUB project

Preserving, Researching and Fostering  
the Linguistic, Historical and Cultural  
Heritage of European Deaf Signing  
Communities with an Integral Resource

# The SIGN-HUB

The SIGN-HUB project aims to provide the first comprehensive response to the societal and scientific challenge resulting from generalised neglect of the cultural and linguistic identity of signing Deaf communities in Europe.

This is a **four-year project** (2016-2020) funded by the European Commission within Horizon 2020.

The project results will be available on an **online platform**, which will allow users to easily access contents in the format of videos, text, and images through customized interfaces.

This digital platform will promote public disclosure of results and actions to make them highly visible within the **scientific community** and among **stakeholders** (Deaf community, policy makers, institutions and associations, sign language interpreters, educators, and clinicians).

## Our four research projects



Digital grammars of 6 sign languages, produced with a new online grammar writing tool



An interactive digital atlas of linguistic structures of the world's sign languages



Online sign language assessment instruments for education and clinical intervention



Digital archive of old signers' linguistic and cultural heritage



## Upcoming events



[May 8-12, 2017](#)

SIGN-HUB Summer School in Gargnano sul Garda (Italy)



[June 21-22, 2017](#)

FEAST conference in Reykjavik (Iceland)

*Save the dates!*

