

29th IWSM 2014 - Contents

1 Programme	2
2 Schedule	3
3 Poster Presentations	11
4 List of Participants	13
5 Pauliner Church & Alfred-Hessel-Saal: Venue Map	18
6 Venue	19
7 City Map	21

29th IWSM 2014 - Programme

Monday	Tuesday	Wednesday	Thursday	Friday
Opening (09.20-09.30)				
Contributed Session 1 (09.30-10.50)	Contributed Session 5 (09.00-10.20)	Contributed Session 9 (09.00-10.20)	Contributed Session 11 (09.00-10.20)	Contributed Session 15 (09.30-10.30)
Coffee Break (10.50-11.20)	Coffee Break (10.20-10.50)	Coffee Break (10.20-10.50)	Coffee Break (10.20-10.50)	Coffee Break (10.30-11.00)
Invited Talk 1 (11.20-12.20)	Invited Talk 2 (10.50-11.50)	Invited Talk 3 (10.50-11.50)	Invited Talk 4 (10.50-11.50)	Invited Talk 5 (11.00-12.00)
Contributed Session 2 (12.20-13.00)	Contributed Session 6 (11.50-12.50)	Contributed Session 10 (11.50-13.10)	Contributed Session 12 (11.50-12.50)	Contributed Session 16 & Bye Bye (12.00-13.15)
SMS AGM&IWSM30 advert (12.50-13.20)				
Lunch (13.00-14.30)	Lunch (12.50-13.50)	Lunch (take away) (13.10-13.30)	Lunch (13.20-14.50)	Lunch (13.15-14.00)
Contributed Session 3 (14.30-16.10)	Poster Session (13.50-15.20)	Excursion (14.00 & 15.00)	Contributed Session 13 (14.50-16.10)	
Coffee Break (16.10-16.40)	Coffee Break (15.20-15.40)		Coffee Break (16.10-16.40)	
Contributed Session 4 (16.40-18.00)	Contributed Session 7 (15.40-16.40)		Contributed Session 14 (16.40-18.00)	
	Coffee Break (16.40-17.00)			
	Contributed Session 8 (17.00-18.00)			
Welcome Reception (19.30-open end)				
			Conference Dinner (19.30-open end)	

29th IWSM 2014 - Schedule

MONDAY July 14th, VENUE: Alfred-Hessel-Saal

08.15–09.20 Registration

Note that the Registration Desk will be open in any Coffee/Lunch Break.

09.20–09.30 Opening

09.30–10.50 Contributed Session 1

Chair: Thomas Kneib

09.30–09.50 Fabian Scheipl, Ana-Maria Staicu, Sonja Greven: *Functional Additive Mixed Models*

09.50–10.10 Jona Cederbaum, Sonja Greven, Marianne Pouplier, Phil Hoole: *Functional linear mixed model for irregularly spaced phonetics data*

10.10–10.30 Sarah Brockhaus, Fabian Scheipl, Torsten Hothorn, Sonja Greven: *The Functional Linear Array Model and an Application to Viscosity Curves*

10.30–10.50 Pedro Alberto Morettin, Chang Chiann, Michel Montoril: *Wavelet Estimation of Functional-Coefficient Regression Models*

10.50–11.20 Coffee Break

11.20–12.20 Invited Talk 1

Chair: Gerhard Tutz

Simon Wood: *General smooth additive modelling*

12.20–13.00 Contributed Session 2

Chair: Gerhard Tutz

12.20–12.40 Nadja Klein, Francisco Gude, Carmen Cadarso-Suárez, Thomas Kneib: *Bivariate Gaussian Distributional Regression: An Application on Diabetes*

12.40–13.00 Fernanda de Bastiani, Mikis Stasinopoulos, Robert Rigby: *Spatial Modelling using GAMLSS*

13.00–14.30 Lunch

14.30–16.10 Contributed Session 3

Chair: Paul H.C. Eilers

14.30–14.50 Trias Wahyuni Rakhmawati, Geert Molenberghs, Geert Verbeke, Christel Faes: *Local Influence Diagnostics for Generalized Linear Mixed Models With Overdispersion*

14.50–15.10 Louise Marquart, Michele Haynes, Peter Baker: *Impact of misspecified random effect distributions on panel survey data*

15.10–15.30 Salvatore Fasola, Vito Muggeo: *Change-point estimation in piecewise constant regression models with random effects*

15.30–15.50 Christian Röver, Tim Friede: *Bayesian inference in random-effects meta-analysis*

15.50–16.10 Shahla Ramzan, Gerhard Tutz, Christian Heumann: *Improved Methods for Nearest Neighbor Imputation*

16.10–16.40 Coffee Break

16.40–18.00 Contributed Session 4

Chair: Jim Booth

- 16.40–17.00 Juliane Manitz, Jonas Harbering, Marie Schmidt, Thomas Kneib, Anita Schöbel: *Network-based Source Detection: From Infectious Disease Spreading to Train Delay Propagation*
- 17.00–17.20 Sebastian Meyer, Leonhard Held: *Flexible estimation of spatio-temporal interaction in a point process model for infectious disease spread*
- 17.20–17.40 Jaione Etxeberria, Maria Dolores Ugarte, Tomas Goicoa, Ana F. Militino: *Extended space-time ANOVA-type P-spline model to forecast cancer mortality figures*
- 17.40–18.00 Matieyendou Lamboni, Renate Koeble, Adrian Leip: *Bayesian spatial disaggregating of shares: application to land use shares in EU*
-

19.30 Welcome Reception (Venue: Historic Gauß Observatory)

TUESDAY July 15th, VENUES: Alfred-Hessel-Saal & Pauliner Church

9.00–10.20 Contributed Session 5

Chair: Stefan Lang

- 9.00–9.20 Helen Elizabeth Ogden: *Inference for generalized linear mixed models with sparse structure*
- 9.20–9.40 Yi Pan: *Joint estimation of between-subject and within-subject covariance matrix for financial data*
- 9.40–10.00 Mark William Donoghoe, Ian C. Marschner: *Smooth semi-parametric adjustment of rate differences, risk differences and relative risks*
- 10.00–10.20 Cibele Maria Russo, Sten Willemsen, Dorival Leão, Emmanuel Lesaffre: *Non-linear mixed-effects models for bioequivalence on pharmacokinetic data*
-

10.20–10.50 Coffee Break**10.50–11.50 Invited Talk 2**

Chair: John Hinde

Antoine de Falguerolles: *La statistique à Goettingue: a tentative tribute by an IWSM participant from Toulouse*

11.50–12.50 Contributed Session 6

Chair: John Hinde

- 11.50–12.10 Pere Puig: *Beyond the Gauss' principle*
- 12.10–12.30 Fabian Sobotka, Thomas Kneib: *Semiparametric quantile regression using a mixed model representation*
- 12.30–12.50 Margret-Ruth Oelker, Fabian Sobotka, Thomas Kneib: *On (Semiparametric) Mode Regression*
-

12.50–13.50 Lunch**13.50–15.20 Poster Session** (Venue: Pauliner Church)**15.20–15.40 Coffee Break****15.40–16.40 Contributed Session 7**

Chair: Vito Muggeo

- 15.40–16.00 Emmanuel Lesaffre: *Joint modeling of a multilevel factor analytic model and a multilevel covariance regression model*
- 16.00–16.20 Ipek Guler, Christel Faes, Franciso Gude, Carmen Cadarso-Suárez: *Comparing the predictive performance of different regression models for longitudinal and time-to-event data*
- 16.20–16.40 Carlo Giovanni Camarda: *Reconstructing Mortality Series by Cause of Death: Two alternative approaches*

16.40–17.00 Coffee Break

17.00–18.00 Contributed Session 8

Chair: Ernst Wit

17.00–17.20 Andreas Bender, Fabian Scheipl, Wolfgang Hartl, Helmut Küchenhoff: *Modeling Exposure-lag-response associations in Survival Models with application to nutrition of critically ill patients*

17.20–17.40 Sammy Chebon, Helena Geys, Christel Faes: *A Multivariate random component model for simultaneously interval censored and right truncated data*

17.40–18.00 Arnošt Komárek, María José García-Zattera, Alejandro Jara: *Regression modelling of misclassified correlated interval-censored data*

 WEDNESDAY July 16th, VENUE: Alfred-Hessel-Saal

9.00–10.20 Contributed Session 9

Chair: Sonja Greven

- 9.00–9.20 Matthieu Wilhelm, Laura M. Sangalli: *Generalized Models for Spatial Regression with Differential Penalization*
- 9.20–9.40 James Sweeney: *Improved quantitative analysis of tissue characteristics in PET studies with limited uptake information*
- 9.40–10.00 Haakon Christopher Bakka: *She'll be coming 'round the mountain: Simple models of complex spatial behaviour*
- 10.00–10.20 Vera Djordjilovic, Monica Chiogna, Maria Sofia Massa, Chiara Romualdi: *Refining the structure of a pathway with a view to prediction of gene silencing effects*
-

10.20–10.50 Coffee Break**10.50–11.50 Invited Talk 3**

Chair: Maria Durban

Gerhard Tutz: *Regularization and Sparsity in Discrete Structures***11.50–13.10 Contributed Session 10**

Chair: Maria Durban

- 11.50–12.10 Gunther Schauberger, Gerhard Tutz: *DIFboost: A Boosting method for the Detection of Differential Item Functioning*
- 12.10–12.30 Daniela Pauger: *Bayesian Effect Fusion for Categorical and Ordinal Predictors*
- 12.30–12.50 Paul Hofmarcher, Jesus Crespo-Cuaresma, Martin Feldkircher, Bettina Grün, Stefan Humer: *A latent variable approach to derive consensus GDPs*
- 12.50–13.10 Gillian Heller, Lindsay Dunlop: *A latent variable approach to digit preference*
-

13.10–13.30 Lunch (take away)**14.00 & 15.00 Excursion**

Meeting points and times: see p. 20

 THURSDAY July 17th, VENUE: Alfred-Hessel-Saal

9.00–10.20 Contributed Session 11

Chair: Jochen Einbeck

- 9.00–9.20 Ardo van den Hout: *Time-dependency in multi-state models: specification and estimation*
- 9.20–9.40 Chenjerai Kathy Mutambanengwe: *A restricted composite likelihood approach to modelling Gaussian spatial data*
- 9.40–10.00 Eugen Pircalabelu, Gerda Claeskens, Sara Jahfari, Laurens Waldorp: *Node-wise graphical modeling using the Focused Information Criterion for 'p larger than n' settings*
- 10.00–10.20 Reza Mohammadi, Fentaw Abegaz, Ernst Wit: *Efficient Bayesian inference for Copula Gaussian graphical models*
-

10.20–10.50 Coffee Break**10.50–11.50 Invited Talk 4**

Chair: Arnošt Komárek

Alejandro Jara: *Bayesian nonparametric approaches for the analysis of compositional data based on Bernstein polynomials***11.50–12.50 Contributed Session 12**

Chair: Arnošt Komárek

- 11.50–12.10 Paul Wilson: *The Misuse of The Vuong Test For Non-Nested Models to Test for Zero-Inflation*
- 12.10–12.30 Annette Möller, Gerhard Tutz, Jan Gertheiss: *Random Forests for Functional Covariates*
- 12.30–12.50 Jan Gertheiss, Verena Maier, Engel F. Hessel, Ana-Maria Staicu: *Modeling Binary Functional Data with Application to Animal Husbandry*
-

12.50–13.20 SMS AGM & IWSM 30 Advert**13.20–14.50 Lunch****14.50–16.10 Contributed Session 13**

Chair: Helga Wagner

- 14.50–15.10 Jean Peyhardi, Catherine Trottier, Guédon Yann: *Partitioned conditional generalized linear models for categorical data*
- 15.10–15.30 Karl Heiner, John Hinde: *Measures of Interaction for Relationships Among Dichotomous Variables*
- 15.30–15.50 Marica Manisera, Paola Zuccolotto: *New perspectives on rating data modelling: the Nonlinear CUB*
- 15.50–16.10 Wolfgang Pöbnecker, Gerhard Tutz: *Regularization and Selection of proportional versus nonproportional Effects in Sequential Logit Models*

16.10–16.40 Coffee Break

16.40–18.00 Contributed Session 14: Paul H.C. Eilers Session

Chair: Emmanuel Lesaffre & Brian Marx

16.40–17.00 Emmanuel Lesaffre, Brian Marx: *Tribute to Paul H.C. Eilers*

17.00–17.20 Paul H.C. Eilers, Marco C. A. M. Bink: *RNA Sequencing and Zipf's Law*

17.20–17.40 Gianluca Frasso, Paul H.C. Eilers: *State price density estimation with a composite link model*

17.40–18.00 Sabine K. Schnabel, Paul H.C. Eilers: *Expectile smoothing for big data*

19.30 Conference Dinner (Venue: German Theatre)

 FRIDAY July 18th, VENUE: Alfred-Hessel-Saal

9.30–10.30 Contributed Session 15

Chair: Helmut Küchenhoff

- 9.30–9.50 Pathé Ndao, Aliou Diop, Jean-François Dupuy: *Estimating conditional extreme quantiles under random censoring*
- 9.50–10.10 Gianfranco Lovison, Christian Schindler: *Separate regression modelling of the Gaussian and Exponential components of an EMG response from respiratory physiology*
- 10.10–10.30 Tobias Voigt, Roland Fried: *Modeling Cherenkov Telescope images for Variable Construction in Classification*
-

10.30–11.00 Coffee Break**11.00–12.00 Invited Talk 5**

Chair: Jan Gertheiss

Sophia Rabe-Hesketh: *Consistent estimation of mixed models by ignoring non-ignorable missingness*

12.00–13.15 Contributed Session 16 & Bye Bye

Chair: Jan Gertheiss

- 12.00–12.20 Elisa Duarte, Bruno de Sousa, Carmen Cadarso-Suarez, Vitor Rodrigues, Thomas Kneib: *Structured Additive Regression (STAR) models applied in the analysis of breast cancer risk in central Portugal*
- 12.20–12.40 Carl John Scarrott: *Statistical Estimation of Pollution Reductions for Meeting Government Targets*
- 12.40–13.00 Iain David Currie: *Smooth mixed models for balanced longitudinal data*
- 13.00–13.15 *Bye Bye*
-

13.15–14.00 Lunch

29th IWSM 2014 - Poster Presentations

TUESDAY July 15th, 13.50 - 15.20, VENUE: Pauliner Church

- [1] Diego Ayma, María Durbán, Dae-Jin Lee: *Penalized composite link mixed models for spatially aggregated data*
- [2] Mariano Amo-Salas, Elvira Delgado-Márquez, Jesus López-Fidalgo: *Optimal Experimental Design in a real case*
- [3] Jacek Bialek: *Stochastic Index Numbers in Inflation Measurement*
- [4] Daniel Bonetti, Alexandre Delbem, Jochen Einbeck: *Bivariate Estimation of Distribution Algorithms for Protein Structure Prediction*
- [5] Mileno Cavalcante, Betsabé Blas: *Beta calibration model*
- [6] Hayala Cristina Cavenague de Souza, Gleici da Silva Castro Perdoná, Francisco Louzada Neto, Fernanda Maris Peria : *Parameter estimation for the the Exponentiated Modified Weibull Model with Long Term Survival: A Simulation Study*
- [7] Francesco Donat, Giampiero Marra: *P-IRLS Representation of a Semiparametric Bivariate Triangular Cumulative Link Model*
- [8] Cara Dooley, Joanne Feeney, Rose Anne Kenny *Normative Values of Visual Acuity and Contrast Sensitivity in Older Irish Adults*
- [9] Jochen Einbeck, Daniel Bonetti: *A study of online and blockwise updating of the EM algorithm for Gaussian mixtures*
- [10] Amira Elayouty, Marian Scott, Claire Miller, Susan Waldron, Maria Franco Villoria: *Visualisation and Modelling of Environmental Sensor Time Series*
- [11] Manuela Ender, Tong Ma: *Statistical modeling of extreme precipitation in recent flood regions in China*
- [12] Marco Enea, Mikis Stasinopoulos, Robert Rigby, Antonella Plaia : *The pblm package: semiparametric regression for bivariate categorical responses in R*
- [13] Maria Jesus García-Ligero, Aurora Hermoso-Carazo, Josefa Linares-Pérez: *Least-squares linear distributed estimation for discrete-time systems with packet dropouts*
- [14] Phillip Gichuru, Gillian Lancaster, Andrew Titman, Melissa Gladstone: *Developing Robust Scoring Methods for use in Child Assessment Tools*
- [15] Mousa Goulizadeh, Vida Azod Azad : *Multilevel Factor Analysis of the PIRLS Test for the Iranian Pupils*
- [16] Andreas Groll, Gerhard Tutz: *Variable Selection in Heterogeneous Discrete Survival Models*
- [17] Alexander Hartmann, Stephan Huckemann, Jörn Dannemann, Oskar Laitenberger, Claudia Geisler, Alexander Egner, Axel Munk: *Drift Estimation in Sparse Sequential Dynamic Imaging: with Application to Nanoscale Fluorescence Microscopy*
- [18] Radek Hendrych: *State space analysis of the Prague Stock Exchange index*
- [19] Freddy Hernández, Olga Usuga, Viviana Giampaoli: *A misspecification simulation study in Poisson mixed model*
- [20] Jixia Huang *Identification of Health Risks of Hand, Foot and Mouth Disease in China Using the Geographical Detector Technique*
- [21] Yufen Huang, Bo-Shiang Ke: *Influence Analysis on Crossover Design Experiment in Bioequivalence Studies*
- [22] Germán Ibacache-Pulgar: *Symmetric semiparametric additive models*
- [23] Lydia Lera, Cecilia Albala, Bárbara Leyton, Hugo Sánchez, Bárbara Ángel, María J Hormazabal: *Application of classification tree analysis: Algorithm of diagnostic of sarcopenia in Chilean older people*
- [24] Ivana Malá : *Modelling of the distribution of the unemployment duration in the Czech Republic*
- [25] Mario Martínez-Araya, Jianxin Pan: *Unknown break-point estimation and selection between semi-parametric and segmented models*
- [26] Kenan Matawie, Bahman Javadi: *Mixture distribution model for resources availability in volunteer computing systems*
- [27] Jakob W. Messner, Georg J. Mayr, Achim Zeileis: *Weather Forecasts and Censored Regression with Conditional Heteroscedasticity*

- [28] Juan Manuel Muñoz-Pichardo, Juan Luis Moreno-Rebollo, Rafael Pino-Mejías, María Dolores Cubiles de la Vega: *Influence measures in beta regression models through Fréchet metric*
- [29] Adrian O'Hagan: *Estimation of Upper Tail Dependence for Insurance Loss Data Using an Empirical Copula-based Approach*
- [30] Christian Pfeifer, Peter Höller: *Effects of precipitation and temperature in alpine areas on backcountry avalanche accidents reported in the western part of Austria within 1987–2009*
- [31] Eliane C. Pinheiro, Silvia L. P. Ferrari: *Small-sample one-sided testing in extreme value regression models*
- [32] Hildete P. Pinheiro, Mariana Rodrigues-Motta, Gabriel Franco: *Modelling performance of students with bivariate generalized linear mixed models*
- [33] Rafael Pino-Mejías, María Dolores Cubiles de la Vega, Juan Manuel Muñoz-Pichardo, Juan Luis Moreno-Rebollo: *Identification of Outliers with Boosting Algorithms*
- [34] Iain Proctor, Marian Scott, Rognvald Smith: *Incorporating sub-grid variability of environmental covariates in biodiversity modelling*
- [35] María Xosé Rodríguez - Álvarez, Thomas Kneib , Carmen Cadarso - Suárez: *Semi-parametric ROC Regression based on Conditional Transformation Models*
- [36] Patricia Román-Román, Juan J. Serrano-Pérez, Francisco Torres-Ruiz.: *Approximating unconditioned first-passage-time densities for diffusion processes*
- [37] Mariangela Sciandra, Antonella Plaia: *Classification trees for preference data: a distance-based approach*
- [38] Karin A. Tamura , Viviana Giampaoli, Alexandre Noma: *The impact of the misspecification of the random effects distribution on the prediction of the mixed logistic model*
- [39] Thomai Tsiftsi, Ian H. Jermyn, Jochen Einbeck: *Bayesian shape modelling of cross-sectional geological data*
- [40] Marcio Valk, Aluisio Pinheiro: *Tests for contaminated time series*
- [41] Elisabeth Waldmann, Fabian Sobotka, Thomas Kneib: *Regularisation in Bayesian Expectile Regression*
- [42] Andrea Wiencierz: *Nonparametric regression with interval-valued response*
- [43] Bruce J. Worton, Chris R. McLellan: *Comparison of robust and nonparametric measures of fidelity*
- [44] Dilek Yildiz, Peter W.F. Smith, Peter G.M. van der Heijden: *Extending capture-recapture models to handle erroneous records in linked administrative data*
- [45] Juan Manuel Muñoz-Pichardo, Rafael Pino-Mejías, Juan Luis Moreno-Rebollo, María Dolores Cubiles de la Vega: *Influence measures on beta regression models through Rao distance*

29th IWSM 2014 - List of Participants

Ayma Anza, Diego Armando	Universidad Carlos III de Madrid dayma@est-econ.uc3m.es
Bakka, Haakon Christopher	NTNU haakon.bakka@math.ntnu.no
Bender, Andreas	Ludwig-Maximilians-Universität München andreas.bender@stat.uni-muenchen.de
Bialek, Jacek Henryk	University of Łódź, Poland jbialek@uni.lodz.pl
Booth, James G.	Cornell University jim.booth@cornell.edu
Brockhaus, Sarah	Ludwig-Maximilians-Universität München sarah.brockhaus@stat.uni-muenchen.de
Camarda, Carlo Giovanni	Institut National Etudes Démographiques carlo-giovanni.camarda@ined.fr
Cavalcante, Mileno Tavares	Petrobras S.A. milenc@yahoo.com
Cederbaum, Jona	Ludwig-Maximilians-Universität München Jona.Cederbaum@stat.uni-muenchen.de
Chebon, Sammy	Hasselt University, Diepenbeek sammy.chebon@uhasselt.be
Chiogna, Monica	University of Padova monica@stat.unipd.it
Cubiles de la Vega, María Dolores	University of Seville cubiles@us.es
Currie, Iain David	Heriot-Watt University I.D.Currie@hw.ac.uk
De Bastiani, Fernanda	Federal University of Pernambuco fernandadebastiani@gmail.com
de Falguerolles, Antoine	Université de Toulouse (Retraité) antoine@falguerolles.net
de Souza, Hayala Cristina Cavenague	Universidade de São Paulo hayala@lee.dante.br
Delgado-Márquez, Elvira	University of Castilla - La Mancha elvira.delgado.marquez@gmail.com
Djordjilovic, Vera	University of Padua djordjilovic@stat.unipd.it
Donat, Francesco	University College London francesco.donat.12@ucl.ac.uk
Donoghoe, Mark William	Macquarie University mark.donoghoe@mq.edu.au
Dooley, Cara	Trinity College, Dublin dooleyc5@tcd.ie
Duarte, Elisa Maria	University of Santiago de Compostela duarte.elisa@gmail.com
Dupuy, Jean-François	IRMAR-INSA of Rennes jean-francois.dupuy@insa-rennes.fr
Durban, Maria	marisidd Carlos III de Madrid marialuz.durban@uc3m.es
Eilers, Paul H.C.	Erasmus University Medical Center p.eilers@erasmusmc.nl
Einbeck, Jochen	Durham University jochen.einbeck@durham.ac.uk
Elayouty, Amira Sherif	University of Glasgow a.el-ayouti.1@research.gla.ac.uk
Ender, Manuela	Xi'an Jiaotong-Liverpool University, Suzhou, China manuela.ender@xjtlu.edu.cn
Enea, Marco	University of Palermo marco.enea@unipa.it
Etxeberría, Jaione	Public University of Navarre jaione.etxeberría@unavarra.es

Fasola, Salvatore	University of Palermo salvatore.fasola@unipa.it
Ferraz Bonetti, Daniel Rodrigo	University of Sao Paulo daniel.bonetti@gmail.com
Frasso, Gianluca	Université de Liège Gianluca.Frasso@ulg.ac.be
Gampe, Jutta	Max Planck Institute for Demographic Research gampe@demogr.mpg.de
Garcia-Ligero, Maria Jesus	Universidad de Granada mjgarcia@ugr.es
Garcia-Zattera, Maria Jose	Pontificia Universidad Catolica de Chile mjgarcia@uc.cl
Gertheiss, Jan	Georg-August-Universität Göttingen jgerthe@gwdg.de
Gichuru, Phillip Karanja	Lancaster University p.gichuru@lancaster.ac.uk
Golalizadeh, Mousa	Tarbiat Modares University golalizadeh@modares.ac.ir
Greven, Sonja	Ludwig-Maximilians-Universität München sonja.greven@stat.uni-muenchen.de
Groll, Andreas	Ludwig-Maximilians-Universität München groll@math.lmu.de
Guédon, Yann	CIRAD guedon@cirad.fr
Guler Caamano Fajardo, Ipek	University of Santiago de Compostela ipek.guler@usc.es
Guo, Jingyi	Norwegian University of Science and Technology jingyi.guo@math.ntnu.no
Hartmann, Alexander	Georg-August-Universität Göttingen alexander.hartmann@mathematik.uni-goettingen.de
Heiner, Karl	State University of New York kwheiner@aol.com
Heller, Gillian	Macquarie University gillian.heller@mq.edu.au
Hendrych, Radek	Charles University in Prague hendrych@stavex.com
Hernández, Freddy	Universidad Pontificia Bolivariana fhernanb@gmail.com
Hinde, John	NUI Galway john.hinde@nuigalway.ie
Hofmarcher, Paul	Johannes Kepler University paul.hofmarcher@jku.at
Hofner, Benjamin	FAU Erlangen benjamin.hofner@fau.de
Huang, Yufen	National Chung Cheng University yfhuang@math.ccu.edu.tw
Huang, Jixia	Chinese Academy of Sciences huangjx@reis.ac.cn
Ibacache-Pulgar, Germán	University of Valparaíso, Chile german.ibacache@uv.cl
Jara, Alejandro	Pontificia Universidad Católica de Chile atjara@uc.cl
Küchenhoff, Helmut	Ludwig-Maximilians-Universität München kuechenhoff@stat.uni-muenchen.de
Klein, Nadja	Georg-August-Universität Göttingen nklein@uni-goettingen.de
Kneib, Thomas	Georg-August-Universität Göttingen tkneib@gwdg.de
Komárek, Arnošt	Charles University in Prague komarek@karlin.mff.cuni.cz

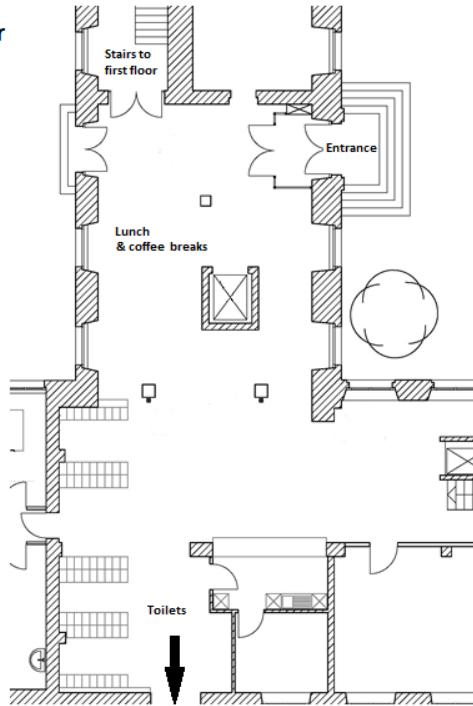
Lamboni, Matieyendou	EC-Joint Research Centre matieyendou.lamboni@jrc.ec.europa.eu
Lang, Stefan	University of Innsbruck stefan.lang@uibk.ac.at
Lee, Dae-Jin	BCAM - Basque Center of Applied Mathematics lee.daejin@gmail.com
Lera, Lydia	INTA, University of Chile llera@inta.uchile.cl
Lesaffre, Emmanuel	Erasmus MC e.lesaffre@erasmusmc.nl
Lovison, Gianfranco	University of Palermo gianfranco.lovison@unipa.it
Möller, Annette	Georg-August-Universität Göttingen annette.moeller@agr.uni-goettingen.de
Malá, Ivana	University of Economics, Prague malai@vse.cz
Manisera, Marica	University of Brescia manisera@eco.unibs.it
Manitz, Juliane	Georg-August-Universität Göttingen jmanitz@uni-goettingen.de
Marquart, Louise	University of Queensland l.marquart@uq.edu.au
Martinez Araya, Mario	University of Manchester mario.martinez@postgrad.manchester.ac.uk
Marx, Brian D.	Louisiana State University bmarx@lsu.edu
Matawie, Kenan	University of Western Sydney k.matawie@uws.edu.au
Mayr, Andreas	Friedrich-Alexander-Universität Erlangen-Nürnberg andreas.mayr@fau.de
Messner, Jakob Wolfgang	University of Innsbruck jakob.messner@uibk.ac.at
Meyer, Sebastian	University of Zurich Sebastian.Meyer@ifspm.uzh.ch
Michaelis, Patrick	Georg-August-Universität Göttingen pmichae@uni-goettingen.de
Miller, Claire	University of Glasgow claire.miller@glasgow.ac.uk
Modugno, Lucia	University of Bologna lucia.modugno@unibo.it
Mohammadi, Reza	University of Groningen a.mohammadi@rug.nl
Moreno-Rebollo, Juan Luis	University of Seville jlmoreno@us.es
Morettin, Pedro Alberto	University of São Paulo pam@ime.usp.br
Muñoz-Pichardo, Juan M.	Universidad De Sevilla juanm@us.es
Muggeo, Vito M. R.	University of Palermo vito.muggeo@unipa.it
Mutambanengwe, Chenjerai Kathy	Hasselt University chenjerai.mutambanengwe@uhasselt.be
Noma, Alexandre	UFABC alex.noma@gmail.com
O'Hagan, Adrian Brendan	University College Dublin adrian.ohagan@ucd.ie
Oelker, Margret-Ruth	Ludwig-Maximilians-Universität München margret.oelker@stat.uni-muenchen.de
Ogden, Helen Elizabeth	University of Warwick H.Ogden@warwick.ac.uk

Pößnecker, Wolfgang	Ludwig-Maximilians-Universität München wolfgang.poessnecker@stat.uni-muenchen.de
Pütz, Peter	Georg-August-Universität Göttingen statbera@uni-goettingen.de
Pan, Yi	The University of Manchester yi.pan@manchester.ac.uk
Pauger, Daniela	Johannes Kepler University Linz daniela.pauger@jku.at
Peyhardi, Jean	University of Montpellier 2 jean.peyhardi@univ-montp2.fr
Pfeifer, Christian	Universität Innsbruck christian.pfeifer@uibk.ac.at
Pinheiro, Hildete Prisco	University of Campinas, Brazil hildete@ime.unicamp.br
Pinheiro, Eliane Cantinho	University of Sao Paulo elianecp@ime.usp.br
Pinheiro, Aluisio S.	University of Campinas apinheiro.unicamp@gmail.com
Pino Mejias, Rafael	University of Seville rafaelp@us.es
Pircalabelu, Eugen	KU Leuven eugen.pircalabelu@kuleuven.be
Proctor, Iain	BASF SE iain.proctor@basf.com
Puig, Pere	Universitat Autònoma de Barcelona ppuig@mat.uab.cat
Röver, Christian	University Medical Center Göttingen christian.roever@med.uni-goettingen.de
Rabe-Hesketh, Sophia	University of California, Berkeley sophiarh@berkeley.edu
Rakhmawati, Trias Wahyuni	Hasselt University triaswahyuni.rakhmawati@uhasselt.be
Ramzan, Shahla	Ludwig-Maximilians-Universität München shahla.ramzan@stat.uni-muenchen.de
Rennies, Hauke	Georg-August-Universität Göttingen hauke.rennies@wiwi.uni-goettingen.de
Reulen, Holger	Georg-August-Universität Göttingen hreulen@uni-goettingen.de
Rigby, Robert	London Metropolitan University r.rigby@londonmet.ac.uk
Rodríguez-Álvarez, María Xosé	University of Vigo mxrodriguez@uvigo.es
Román-Román, Patricia	Universidad de Granada proman@ugr.es
Säfken, Benjamin	Georg-August-Universität Göttingen bsaefke@uni-goettingen.de
Scarrott, Carl John	University of Canterbury carl.scarrott@canterbury.ac.nz
Schauberger, Gunther	Ludwig-Maximilians-Universität München gunther.schauberger@stat.uni-muenchen.de
Scheffler, Bernard	Roche Diagnostics GmbH bernard.scheffler@roche.com
Schipper, Maarten	National Institute for Public Health and the Environment maarten.schipper@rivm.nl
Schnabel, Sabine	Wageningen UR sabine.schnabel@wur.nl
Sciandra, Mariangela	Università degli studi di Palermo mariangela.sciandra@unipa.it
Sobotka, Fabian	Georg-August-Universität Göttingen fabian.sobotka@wiwi.uni-goettingen.de

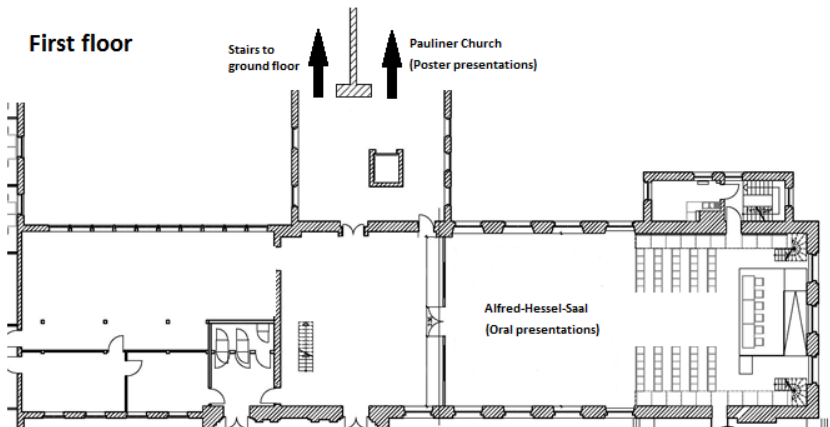
Sohn, Alexander	Georg-August-Universität Göttingen asohn@uni-goettingen.de
Spiegel, Elmar	Georg-August-Universität Göttingen espiege@uni-goettingen.de
Stanfill, Bryan Adams	CSIRO bryan.stanfill@csiro.au
Stasinopoulos, Dimitrios	London Metropolitan University d.stasinopoulos@londonmet.ac.uk
Sweeney, James	UCD james.sweeney@ucd.ie
Tamura, Karin Ayumi	IME-USP karin.ayumi.tamura@gmail.com
Tsiftsi, Thomai	Durham University thomai.tsiftsi@dur.ac.uk
Tutz, Gerhard	Ludwig-Maximilians-Universität München tutz@stat.uni-muenchen.de
Usuga, Olga Cecilia	Universidad de Antioquia ousuga@gmail.com
van de Kasstele, Jan	National Institute for Public Health and the Environment - RIVM jan.van.de.kasstele@rivm.nl
van den Hout, Ardo	University College London ardo.vandenhout@ucl.ac.uk
Vidoni, Paolo	University of Udine paolo.vidoni@uniud.it
Voigt, Tobias	TU Dortmund voigt@statistik.tu-dortmund.de
Wagner, Helga	Johannes Kepler University Linz helga.wagner@jku.at
Waldmann, Elisabeth	Georg-August-Universität Göttingen ewaldma@uni-goettingen.de
Wang, Jinfeng	Chinese Academy of Sciences hjx0701@126.com
Wiencierz, Andrea	Ludwig-Maximilians-Universität München Andrea.Wiencierz@stat.uni-muenchen.de
Wilhelm, Matthieu	Université de Neuchâtel matthieu.wilhelm@unine.ch
Willemsen, Sten	Erasmus MC Secretariat.Biostatistics@ErasmusMC.nl
Wilson, Paul Joseph	University of Wolverhampton pauljwilson@wlv.ac.uk
Wit, Ernst	University of Groningen e.c.wit@rug.nl
Wood, Simon	University of Bath s.wood@bath.ac.uk
Worton, Bruce J.	University of Edinburgh Bruce.Worton@ed.ac.uk
Yildiz, Dilek	University of Southampton D.Yildiz@soton.ac.uk
Zuccolotto, Paola	University of Brescia paola.zuccolotto@unibs.it

29th IWSM 2014 - Pauliner Church & Alfred-Hessel-Saal: Venue Map

Ground floor



First floor



29th IWSM 2014 - Venue

(A) Pauliner Church & Alfred-Hessel-Saal

Sessions

Papendiek 14,
37073 Göttingen



Initially, the Pauliner Church was part of a Dominican monastery founded in 1294. In 1733, George II, later King of the British Empire, decided to found a university in Göttingen. One year later, the university library was set up in a hall belonging to the former monastery. The fast-growing number of books repeatedly led to shortages of space, and the library soon spread throughout the whole building. In 1812, the newly-created upper storey of the Pauliner Church became part of the library. Hosting the library's historical holdings, it came to be known as the Historical Hall. During the Second World War the Pauliner Church was largely destroyed. Following reconstruction, the Pauliner Church was used also as a lecture hall. Today, the Historical Hall provides a worthy setting for exhibitions as well as for scientific and cultural events.

(B) Historic Gauß Observatory

Welcome Reception

Geismar Landstr. 11,
37083 Göttingen



The Royal University Observatory was built from 1803 to 1816. Until 1855, the Göttingen University Observatory was place of work and residence of the scholar Carl Friedrich Gauß. The Observatory – at the time located on the outskirts, where it offered a clear view of the sky and distant objects – was a modern research institute and offered the freedom for research. The university still owns some of the original instruments of Gauß' time. After Gauß's death, Wilhelm Weber and Peter Lejeune-Dirichlet became provisional directors of the observatory, but neither of them was an astronomer. In 2008, the University of Göttingen has completed the renovation of the Historical Observatory according to the original plans. It is now a masterpiece of museum-like quality and an impressive example of past research at the Historical Observatory.

(C) German Theatre

Conference Dinner

Theaterplatz 11,
37073 Göttingen



The German Theatre is the biggest of three theatres in Göttingen. Each repertory season it presents more than 20 premiers and 15 revivals. When the original town theater burned down in 1887, this venue was built and celebrated reopening in 1890. Since then, the building was renovated several times and extensions were added. Until the 1950, the theatre presented operas as well as operettas, but because of financial cuts it focused then on drama theatres. With the management by the intendant Heinz Hilpert, the German theatre started to flourish and Göttingen became known for its theatre. Today, the productions include classic repertory, as well as contemporary German and international dramatic.

Source: <http://www.sub.uni-goettingen.de/en/about-us/portrait/history/>

29th IWSM 2014 - City Map

(A) Pauliner Church & Alfred-Hessel-Saal

(B) Historic Gauß Observatory

(C) German Theatre

(1) Excursion 'Gauß in Göttingen' sightseeing tour

Meeting time & place: 15.00, in front of Old Town Hall, Markt 9, 37073 Göttingen

(2) Excursion Inner-German border museum

Meeting time & place: 14.00, bus terminal behind Old Town Hall, Markt 9, 37073 Göttingen

