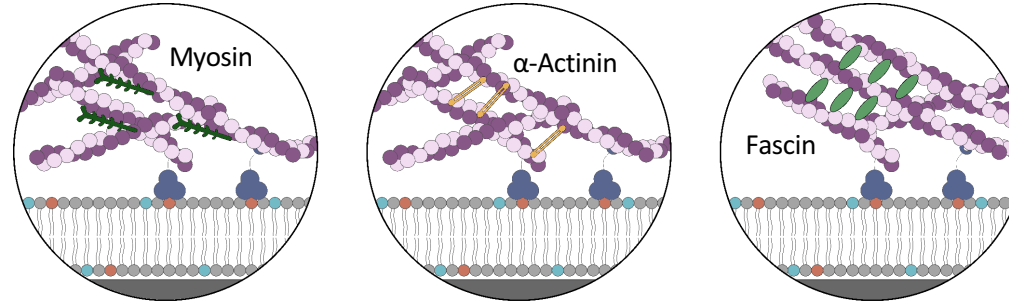


- Methoden
- » RfS
  - » FRAP
  - » Fluorescence microscopy
    - » CLSM
    - » TIRF
    - » Airyscan

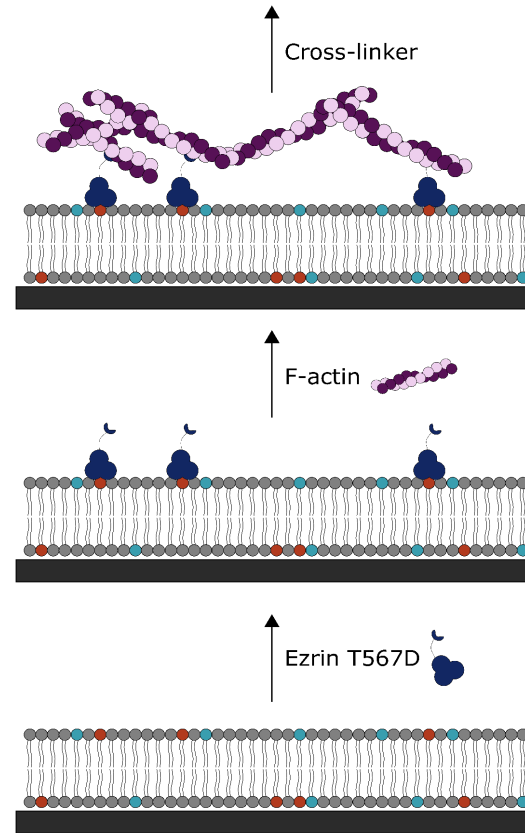
# Organisation von Aktomyosin-Netzwerken gekoppelt an artifizielle Membranen



Elena Ackermann

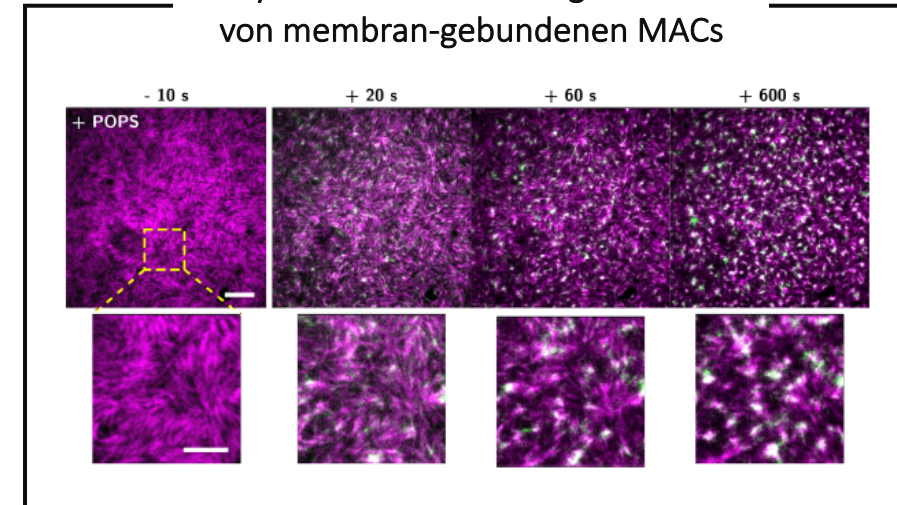


Untersuchung der Quervernetzung von Aktin-Netzwerken durch Cross-Linker (Fascin, Filamin,  $\alpha$ -Actinin)

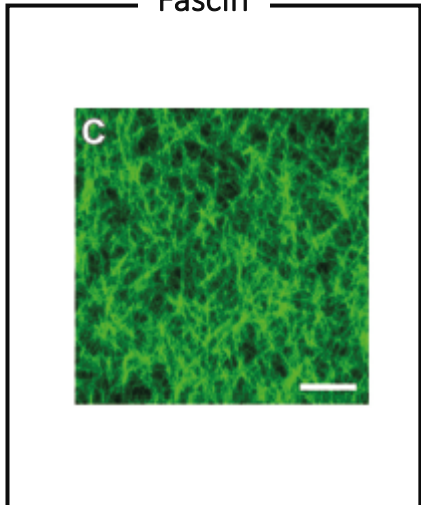


Bottom-up approach auf solid-supported lipid bilayers (SLBs) von Minimal Actin Cortices (MACs)

Myosin induzierte Reorganisation von membran-gebundenen MACs



Fascin



$\alpha$ -Actinin

